

COMPLETE ASSEMBLY  
EST WT = 162 lb [73.6 kg]

DRIVE RING & FRICTION DISCS  
EST WT = 89.6 lb [40.6 kg]  
EST WR<sup>2</sup> = 17 lb-ft<sup>2</sup> [0.716 kg-m<sup>2</sup>]

ALL ROTATING MEMBERS (PTO ENGAGED)  
EST WR<sup>2</sup> = 21.6 lb-ft<sup>2</sup> [0.909 kg-m<sup>2</sup>]

③ ⑧ ⑩ ⑰  
ADJUST CLUTCH UNTIL 107 TO 141 lbf-ft (144-191 N-m)  
TORQUE IS REQUIRED ON THE OPERATING SHAFT TO  
ENGAGE THE CLUTCH. STAMP NAMEPLATE  
ACCORDINGLY.

① TORQUE = 74-86 lbf-ft (100-116 N-m)

② APPLY LOCTITE 242 OR EQUAL

① TORQUE = 90-110 lbf-ft (122-149 N-m)

LUBRICATION: USE EP-2 LITHIUM BASE GREASE TO  
LUBRICATE BEARINGS. SEE NAMEPLATE FOR  
DETAILED INSTRUCTIONS.

⑤ APPLY LOCTITE 242 OR EQUAL

④ GREASE FILL HOUSING WITH 5.56 fl-oz [164 cm<sup>3</sup>],  
DISTRIBUTED EVENLY BETWEEN BOTH ZERKS.

MEETS SAE J617 STANDARD FOR BELLHOUSING

③ CLUTCH PACK INFORMATION  
\* SEE CLUTCH PACK DRAWING FOR OTHER  
IMPORTANT DETAILS. CONTACT A WPT  
REPRESENTATIVE FOR THIS DRAWING.

③ CUSTOMER SUPPLIED OUTBOARD SUPPORT  
PLATE IS REQUIRED FOR SIDeload APPLICATIONS  
AND RECOMMENDED FOR IN-LINE APPLICATIONS.

A	EC012041	04 Dec 15	RC
REV	REVISIONS	DATE	BY

RPM	ALLOWABLE SIDE PULL - lb [kg]						
	"X" DISTANCE - in [mm]						
	10" [254]	11" [279]	12" [305]	13" [330]	14" [356]	15" [381]	16" [406]
2500	5151 [2336]	4121 [1869]	3434 [1558]	2943 [1335]	2575 [1168]	2289 [1038]	2060 [935]
2300	5281 [2396]	4225 [1916]	3521 [1597]	3018 [1369]	2641 [1198]	2347 [1065]	2112 [958]
2100	5427 [2462]	4342 [1969]	3618 [1641]	3101 [1407]	2714 [1231]	2412 [1094]	2171 [985]
1800	5684 [2578]	4547 [2063]	3789 [1719]	3248 [1473]	2842 [1289]	2526 [1146]	2274 [1031]

UNLESS OTHERWISE SPECIFIED

Fractional ± 1/64" [±.39]	125 [3.2]
.x ± .030" [±.76]	
.xx ± .015" [±.38]	
.xxx ± .005" [±.127]	
Angles ± 1/2°	
Corner Radii ± R 1/64"	

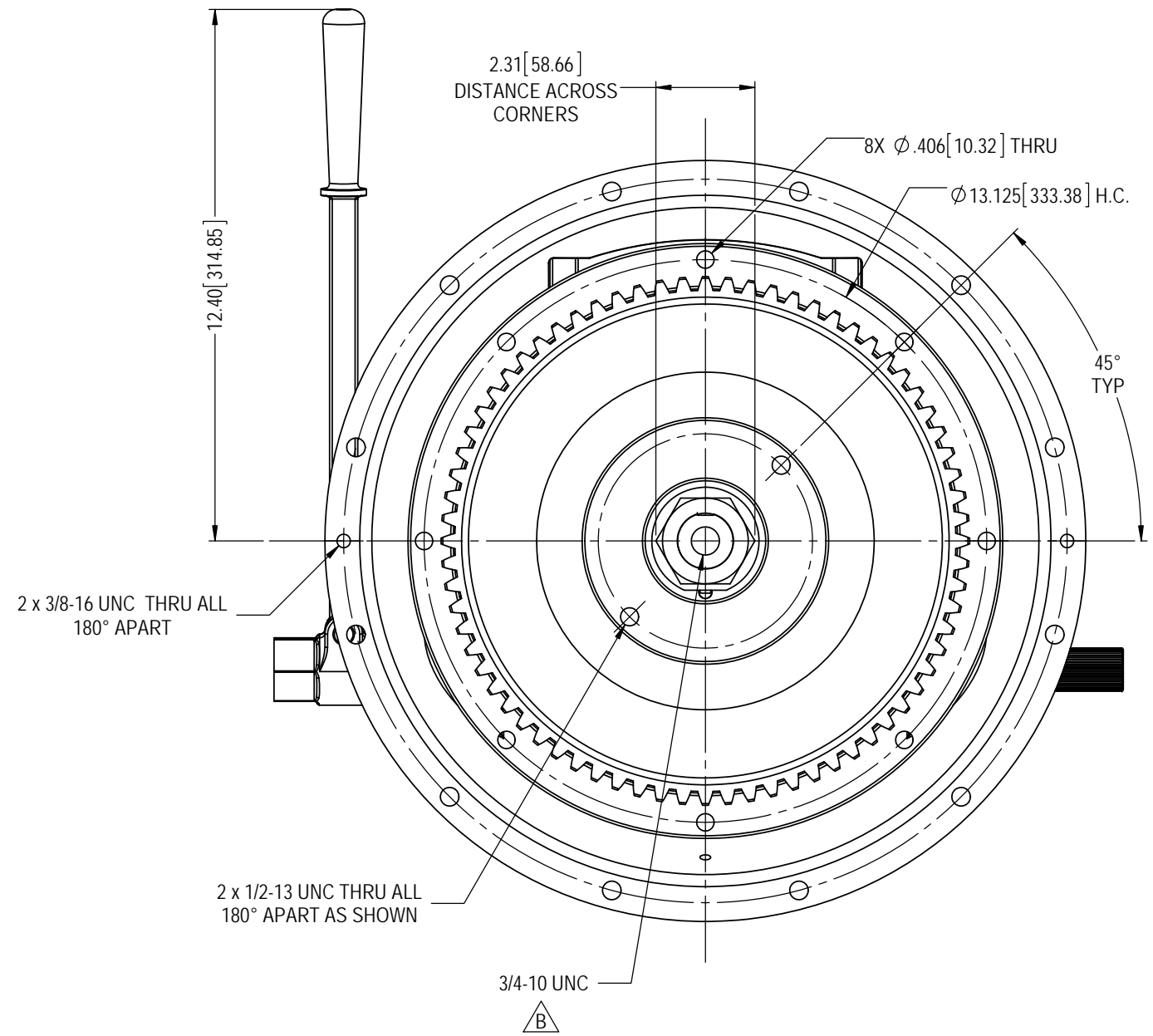
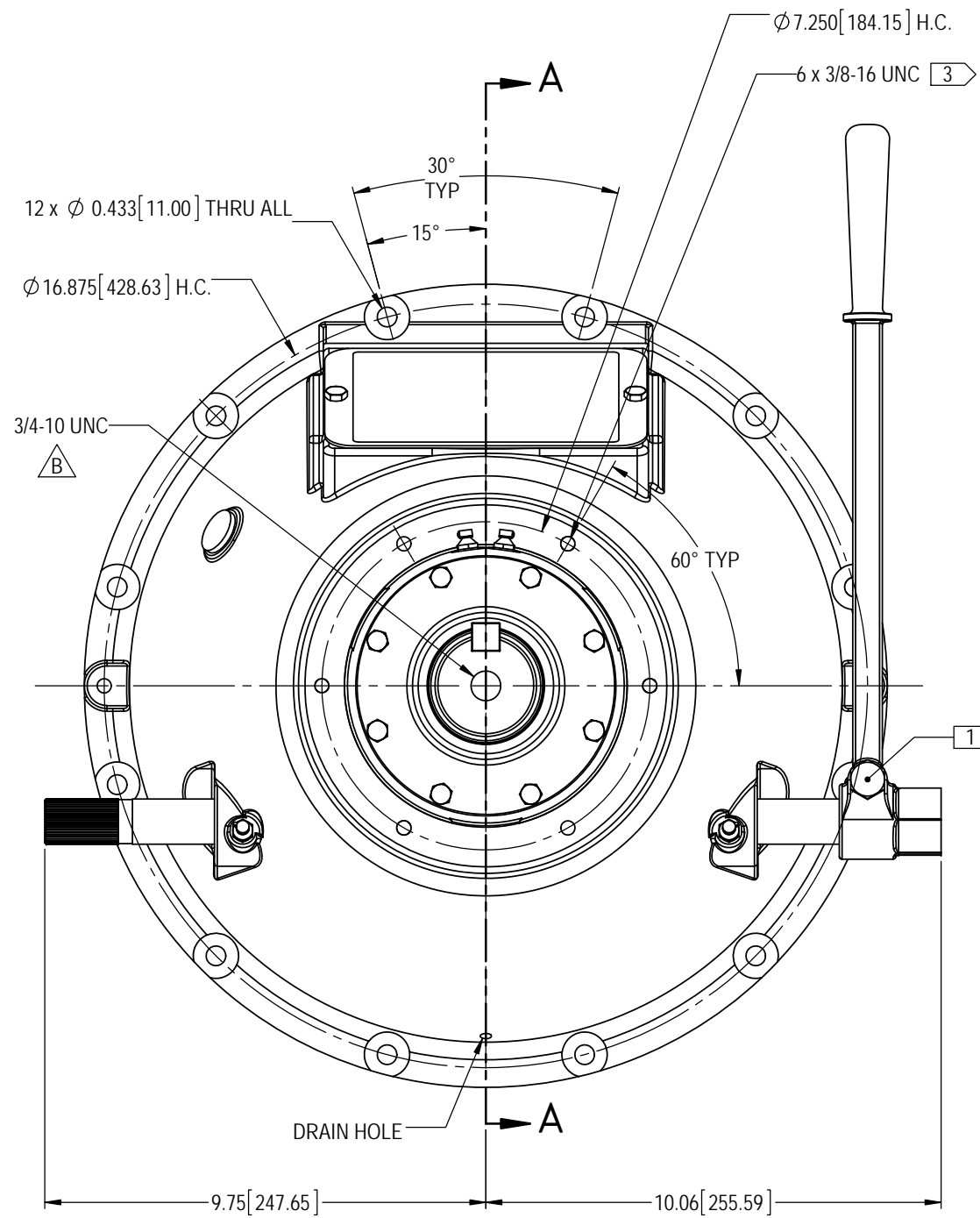
THIRD ANGLE PROJECTION

WPT POWER CORPORATION ENGINEERING DRAWINGS ARE NOT TO BE REPRODUCED IN ANY FORM WHATSOEVER WITHOUT AUTHORIZATION	
DRAWN TDC	DATE 05 Feb 15
CHECKED BDS	DATE 04 Mar 15
APPROVED RC	DATE 09 Mar 15
ISSUED HMA	DATE 09 Mar 15

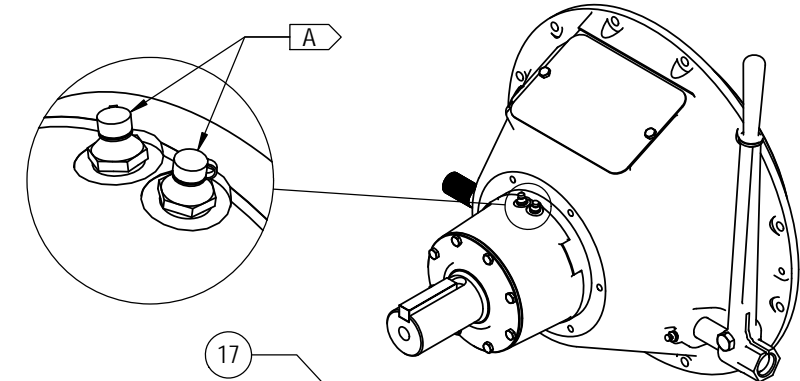
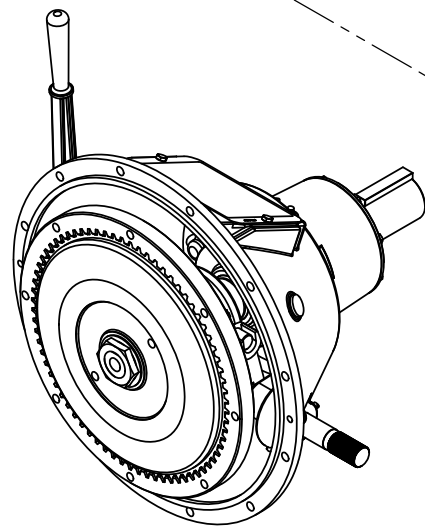
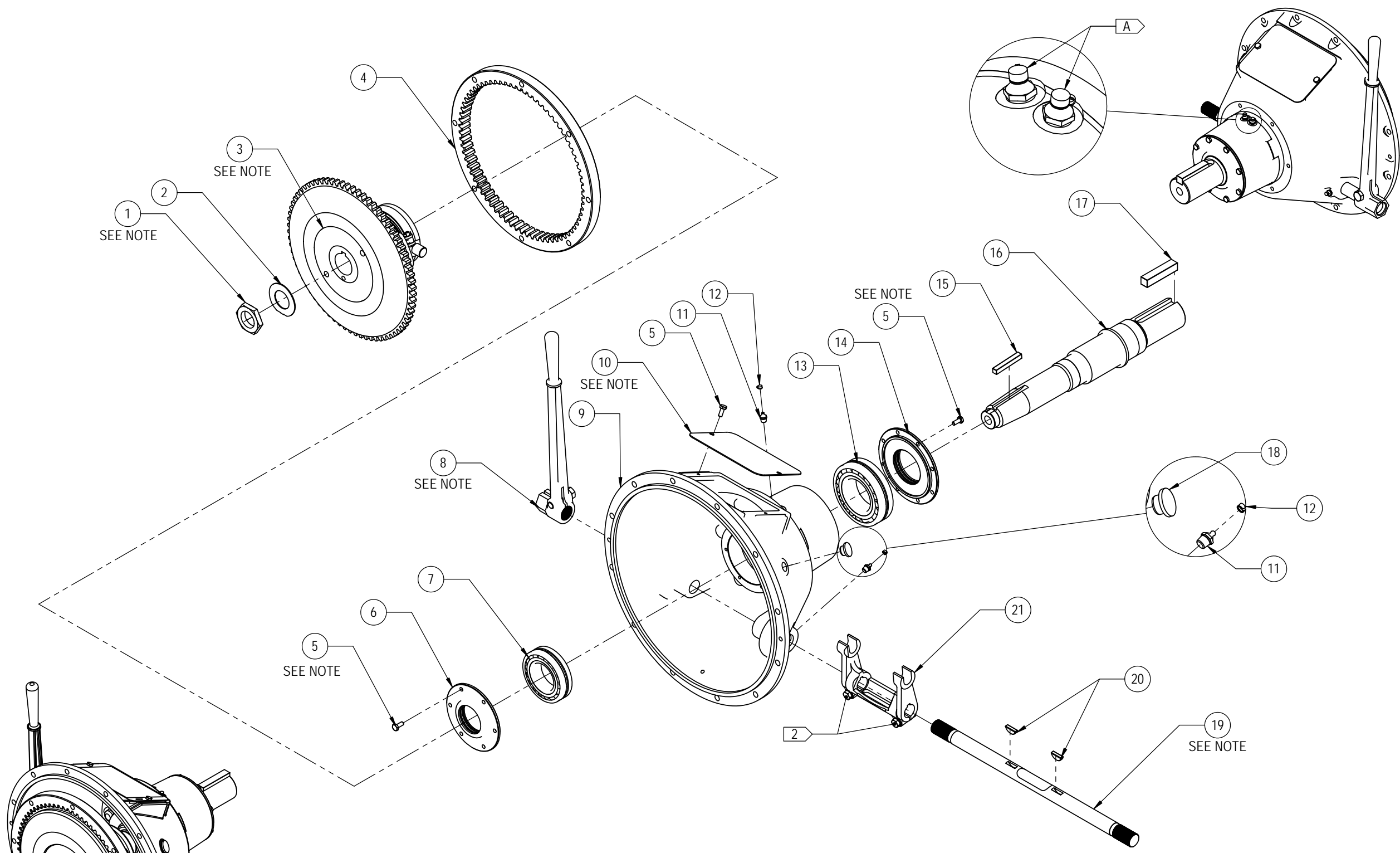
**WPT POWER CORPORATION**

**TD STYLE SP111HP MECH PTO, SAE #3 BELLHOUSING, BRONZE COLLAR, PILOTLESS**

PART NUMBER WTD-11-13F	REVISION A	SHEET 1	OF 3
---------------------------	---------------	------------	---------



UNLESS OTHERWISE SPECIFIED		WPT POWER CORPORATION ENGINEERING DRAWINGS ARE NOT TO BE REPRODUCED IN ANY FORM WHATSOEVER WITHOUT AUTHORIZATION		<b>WPT POWER</b> CORPORATION	TD STYLE SP111HP MECH PTO, SAE #3 BELLHOUSING, BRONZE COLLAR, PILOTLESS		
Fractional	± 1/64" [±.39]	DRAWN	DATE				
.x	± .030" [±.76]	TDC	05 Feb 15	PART NUMBER WTD-11-13F			
.xx	± .015" [±.38]	CHECKED	DATE			REVISION	SHEET
.xxx	± .005" [±.127]	BDS	04 Mar 15			A	2
Angles	± 1/2° [3.2]	APPROVED	DATE			OF	3
Corner Radii	± R 1/64"	RC	09 Mar 15				
THIRD ANGLE PROJECTION		ISSUED	DATE				
		HMA	09 Mar 15				



UNLESS OTHERWISE SPECIFIED		WPT POWER CORPORATION ENGINEERING DRAWINGS ARE NOT TO BE REPRODUCED IN ANY FORM WHATSOEVER WITHOUT AUTHORIZATION		<b>WPT POWER</b> CORPORATION	TD STYLE SP111HP MECH PTO, SAE #3 BELLHOUSING, BRONZE COLLAR, PILOTLESS	
Fractional	± 1/64" [±.39]	DRAWN	DATE			
.x	± .030" [±.76]	TDC	05 Feb 15			
.xx	± .015" [±.38]	CHECKED	DATE			
.xxx	± .005" [±.127]	BDS	04 Mar 15			
Angles	± 1/2° [3.2]	APPROVED	DATE			
Corner Radii	± R 1/64"	RC	09 Mar 15	PART NUMBER WTD-11-13F		
THIRD ANGLE PROJECTION		ISSUED	DATE			REVISION
		HMA	09 Mar 15	A	3	3