

COMPLETE ASSEMBLY
EST WT = 212 lb [96.4 kg]

DRIVE RING & FRICTION DISCS
EST WT = 24.1 lb [10.9 kg]
EST WR² = 6.23 lb-ft² [0.262 kg-m²]

ALL ROTATING MEMBERS (PTO ENGAGED)
EST WR² = 6.58 lb-ft² [0.277 kg-m²]

③ ⑦ ⑨ ⑳
ADJUST CLUTCH UNTIL 134 TO 177 lbf-ft (181-240 N-m) TORQUE IS REQUIRED ON THE OPERATING SHAFT TO ENGAGE THE CLUTCH. STAMP NAMEPLATE ACCORDINGLY.

① TORQUE = 74-86 lbf-ft (100-116 N-m)

② APPLY LOCTITE 242 OR EQUAL

① TORQUE = 90-110 lbf-ft (122-149 N-m)

LUBRICATION: USE EP-2 LITHIUM BASE GREASE TO LUBRICATE BEARINGS. SEE NAMEPLATE FOR DETAILED INSTRUCTIONS.

⑤ APPLY LOCTITE 242 OR EQUAL

① GREASE FILL HOUSING WITH 8.66 fl-oz [256 cm³], DISTRIBUTED EVENLY BETWEEN BOTH ZERKS.

MEETS SAE J617 STANDARD FOR BELLHOUSING

③ CLUTCH PACK INFORMATION

* SEE CLUTCH PACK DRAWING FOR OTHER IMPORTANT DETAILS. CONTACT A WPT REPRESENTATIVE FOR THIS DRAWING.

③ CUSTOMER SUPPLIED OUTBOARD SUPPORT PLATE IS REQUIRED FOR SIDELOAD APPLICATIONS AND RECOMMENDED FOR IN-LINE APPLICATIONS.

D	EC012189	14 Jan 16	RC
C	EC012093	10 Dec 15	RC
B	EC012045	04 Dec 15	RC
REV	REVISIONS	DATE	BY

RPM	"X" DISTANCE - in [mm]					
	11" [279]	12" [305]	13" [330]	14" [356]	15" [381]	16" [406]
2500	7963 [3612]	6345 [2878]	5274 [2392]	4512 [2047]	3943 [1788]	3501 [1588]
2300	8164 [3703]	6506 [2951]	5408 [2453]	4627 [2099]	4043 [1834]	3590 [1628]
2100	8390 [3806]	6686 [3033]	5557 [2521]	4755 [2157]	4154 [1884]	3689 [1673]
1800	8432 [3825]	6720 [3048]	5585 [2533]	4778 [2167]	4175 [1894]	3707 [1682]

UNLESS OTHERWISE SPECIFIED

Fractional ± 1/64" [±.39]

.x ± .030" [±.76]

.xx ± .015" [±.38]

.xxx ± .005" [±.127]

Angles ± 1/2° [3.2]

Corner Radii ± R 1/64"

THIRD ANGLE PROJECTION

WPT POWER CORPORATION
ENGINEERING DRAWINGS
ARE NOT TO BE REPRODUCED
IN ANY FORM WHATSOEVER
WITHOUT AUTHORIZATION

DRAWN: RC DATE: 04 Sep 15

CHECKED: BDS DATE: 9/28/2015

APPROVED: TDC DATE: 28 Sep 15

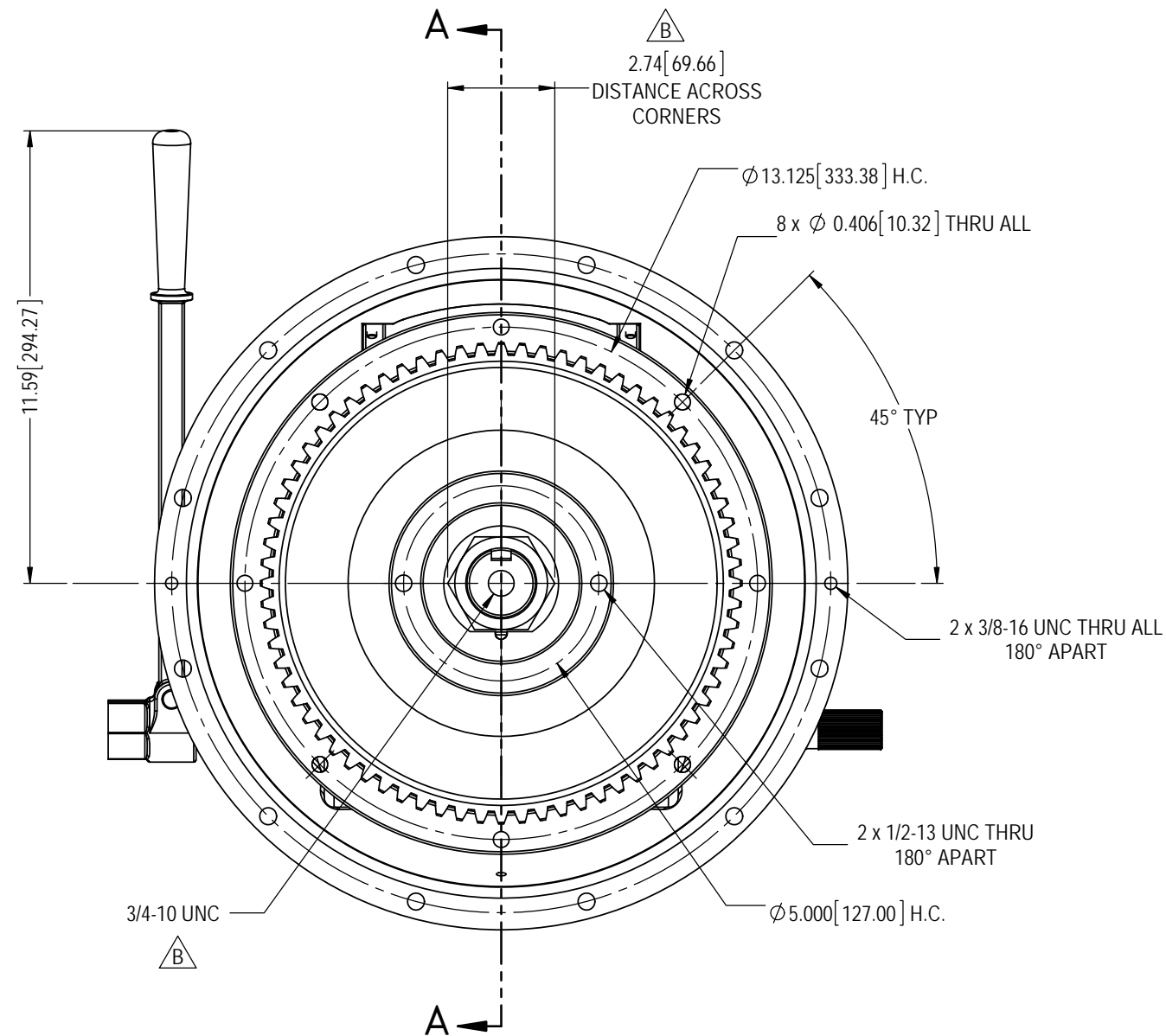
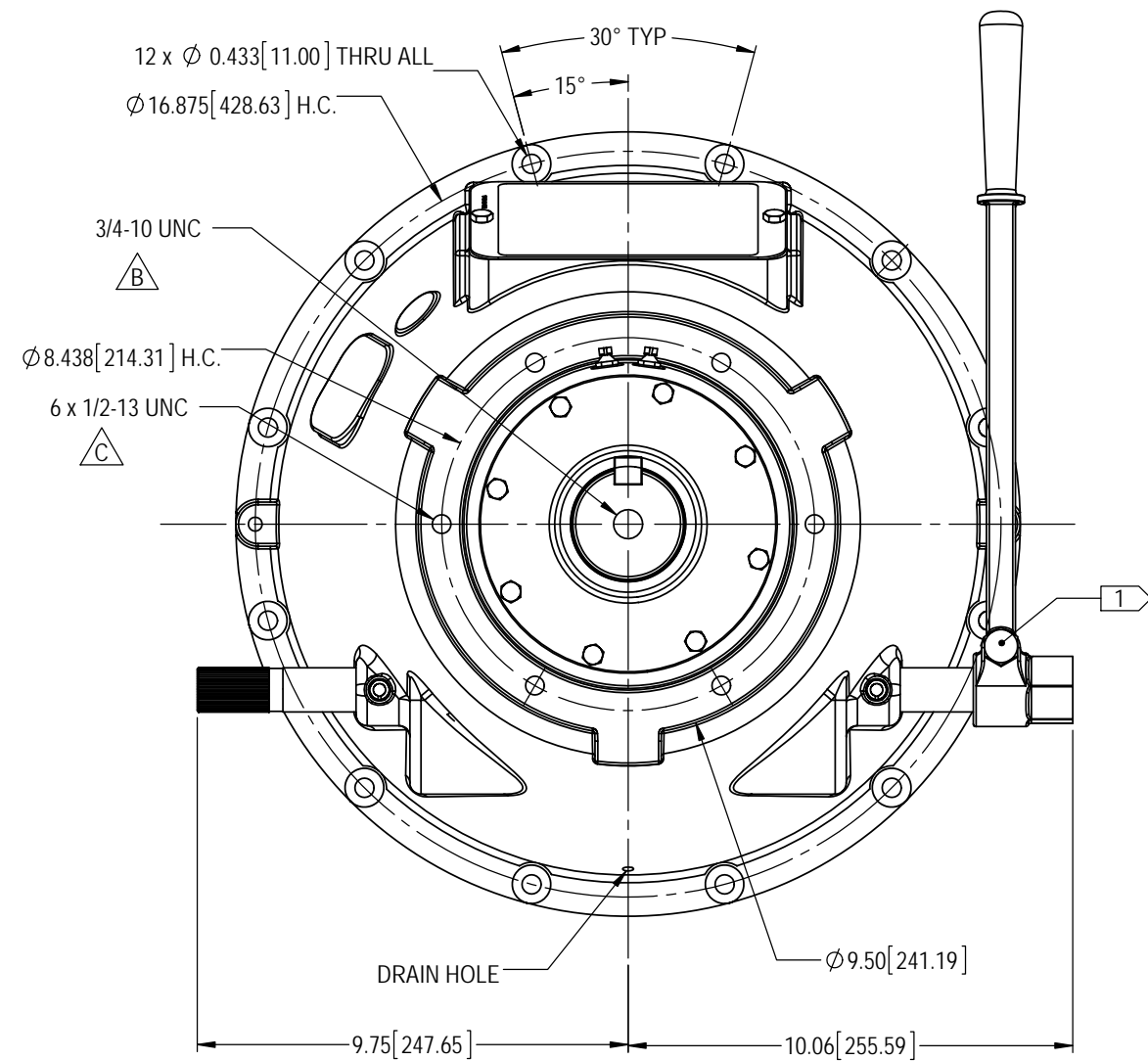
ISSUED: RC DATE: 28 Sep 15

WPT POWER CORPORATION

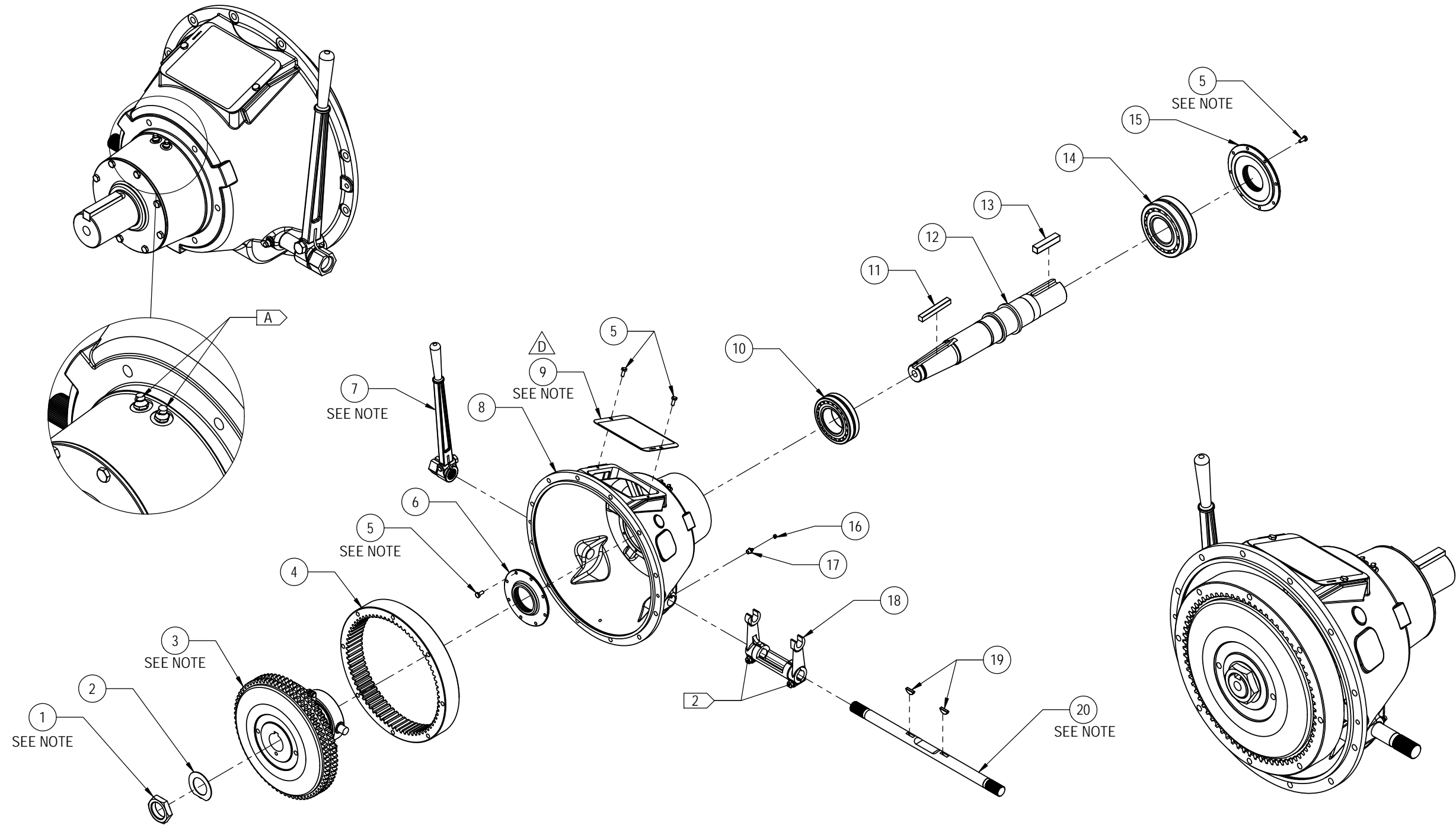
TD STYLE SP211HP MECH PTO, SAE #3 BELLHOUSING, BRG COLLAR, PILOTLESS

PART NUMBER: WTD-11-23G

REVISION: D SHEET: 1 OF: 3



UNLESS OTHERWISE SPECIFIED		WPT POWER CORPORATION ENGINEERING DRAWINGS ARE NOT TO BE REPRODUCED IN ANY FORM WHATSOEVER WITHOUT AUTHORIZATION		WPT POWER CORPORATION
Fractional \pm 1/64" [±.39]	.x \pm .030" [±.76]	.xx \pm .015" [±.38]	.xxx \pm .005" [±.127]	
Angles \pm 1/2° [3.2]	Corner Radii \pm R 1/64"	THIRD ANGLE PROJECTION		TD STYLE SP211HP MECH PTO, SAE #3 BELLHOUSING, BRG COLLAR, PILOTLESS
DRAWN RC		DATE 04 Sep 15		
CHECKED BDS		DATE 9/28/2015		PART NUMBER WTD-11-23G
APPROVED TDC		DATE 28 Sep 15		
ISSUED RC		DATE 28 Sep 15		REVISION D
				SHEET 2
				OF 3



UNLESS OTHERWISE SPECIFIED		WPT POWER CORPORATION ENGINEERING DRAWINGS ARE NOT TO BE REPRODUCED IN ANY FORM WHATSOEVER WITHOUT AUTHORIZATION		WPT POWER CORPORATION	TD STYLE SP211HP MECH PTO,SAE #3 BELLHOUSING,BRG COLLAR,PILOTLESS
Fractional	± 1/64" [±.39]	DRAWN	DATE		
.x	± .030" [±.76]	RC	04 Sep 15		
.xx	± .015" [±.38]	CHECKED	DATE		
.xxx	± .005" [±.127]	BDS	9/28/2015		
Angles	± 1/2° [3.2]	APPROVED	DATE		
Corner Radii	± R 1/64"	TDC	28 Sep 15		
THIRD ANGLE PROJECTION		ISSUED	DATE	PART NUMBER	REVISION SHEET OF
		RC	28 Sep 15	WTD-11-23G	D 3 3