

SECTION A-A

SECTION B-B

**COMPLETE ASSEMBLY**  
EST WT = 367 lb [166 kg]

**DRIVE RING & FRICTION DISCS**  
EST WT = 40.5 lb [18.3 kg]  
EST WR<sup>2</sup> = 15 lb-ft<sup>2</sup> [0.632 kg-m<sup>2</sup>]

**ALL ROTATING MEMBERS (PTO ENGAGED)**  
EST WR<sup>2</sup> = 17.8 lb-ft<sup>2</sup> [0.749 kg-m<sup>2</sup>]

③ ⑦ ⑨ ⑱  
ADJUST CLUTCH UNTIL 218 TO 289 lbf-ft (295-391 N-m) TORQUE IS REQUIRED ON THE OPERATING SHAFT TO ENGAGE THE CLUTCH. STAMP NAMEPLATE ACCORDINGLY.

① TORQUE = 74-86 lbf-ft (100-116 N-m)

② APPLY LOCTITE 242 OR EQUAL

④ TORQUE = 90-110 lbf-ft (122-149 N-m)

LUBRICATION: USE EP-2 LITHIUM BASE GREASE TO LUBRICATE BEARINGS. SEE NAMEPLATE FOR DETAILED INSTRUCTIONS.

⑤ APPLY LOCTITE 242 OR EQUAL

A GREASE FILL HOUSING WITH 16.0 fl-oz [474 cm<sup>3</sup>], DISTRIBUTED EVENLY BETWEEN BOTH ZERKS.

MEETS SAE J617 STANDARD FOR BELLHOUSING

③ CLUTCH PACK INFORMATION

\* SEE CLUTCH PACK DRAWING FOR OTHER IMPORTANT DETAILS. CONTACT A WPT REPRESENTATIVE FOR THIS DRAWING.

③ CUSTOMER SUPPLIED OUTBOARD SUPPORT PLATE IS REQUIRED FOR SIDeload APPLICATIONS AND RECOMMENDED FOR IN-LINE APPLICATIONS.

|     |           |           |    |
|-----|-----------|-----------|----|
| D   | EC012194  | 14 Jan 16 | RC |
| C   | EC012148  | 04 Jan 16 | RC |
| B   | EC012049  | 04 Dec 15 | RC |
| REV | REVISIONS | DATE      | BY |

| RPM  | "X" DISTANCE - in [mm] |             |             |             |             |             |
|------|------------------------|-------------|-------------|-------------|-------------|-------------|
|      | 16" [406]              | 18" [457]   | 20" [508]   | 22" [559]   | 24" [610]   | 26" [660]   |
| 2500 | 5965 [2706]            | 4434 [2011] | 3528 [1600] | 2930 [1329] | 2505 [1136] | 2187 [992]  |
| 2300 | 6117 [2774]            | 4546 [2062] | 3617 [1641] | 3004 [1362] | 2568 [1165] | 2243 [1017] |
| 2100 | 6286 [2851]            | 4672 [2119] | 3718 [1686] | 3087 [1400] | 2639 [1197] | 2305 [1045] |
| 1800 | 6583 [2986]            | 4893 [2219] | 3893 [1766] | 3233 [1466] | 2764 [1254] | 2414 [1095] |

UNLESS OTHERWISE SPECIFIED

|              |           |         |
|--------------|-----------|---------|
| Fractional   | ± 1/64"   | [±.39]  |
| .x           | ± .030"   | [±.76]  |
| .xx          | ± .015"   | [±.38]  |
| .xxx         | ± .005"   | [±.127] |
| Angles       | ± 1/2°    | [3.2]   |
| Corner Radii | ± R 1/64" |         |

THIRD ANGLE PROJECTION

|  |                   |
|--|-------------------|
| WPT POWER CORPORATION<br>ENGINEERING DRAWINGS<br>ARE NOT TO BE REPRODUCED<br>IN ANY FORM WHATSOEVER<br>WITHOUT AUTHORIZATION |                   |
| DRAWN<br>RC  | DATE<br>22 Sep 15 |
| CHECKED<br>BDS   | DATE<br>9/30/2015 |
| APPROVED<br>RDH  | DATE<br>01 Oct 15 |
| ISSUED<br>RC   | DATE<br>02 Oct 15 |

**WPT POWER CORPORATION**

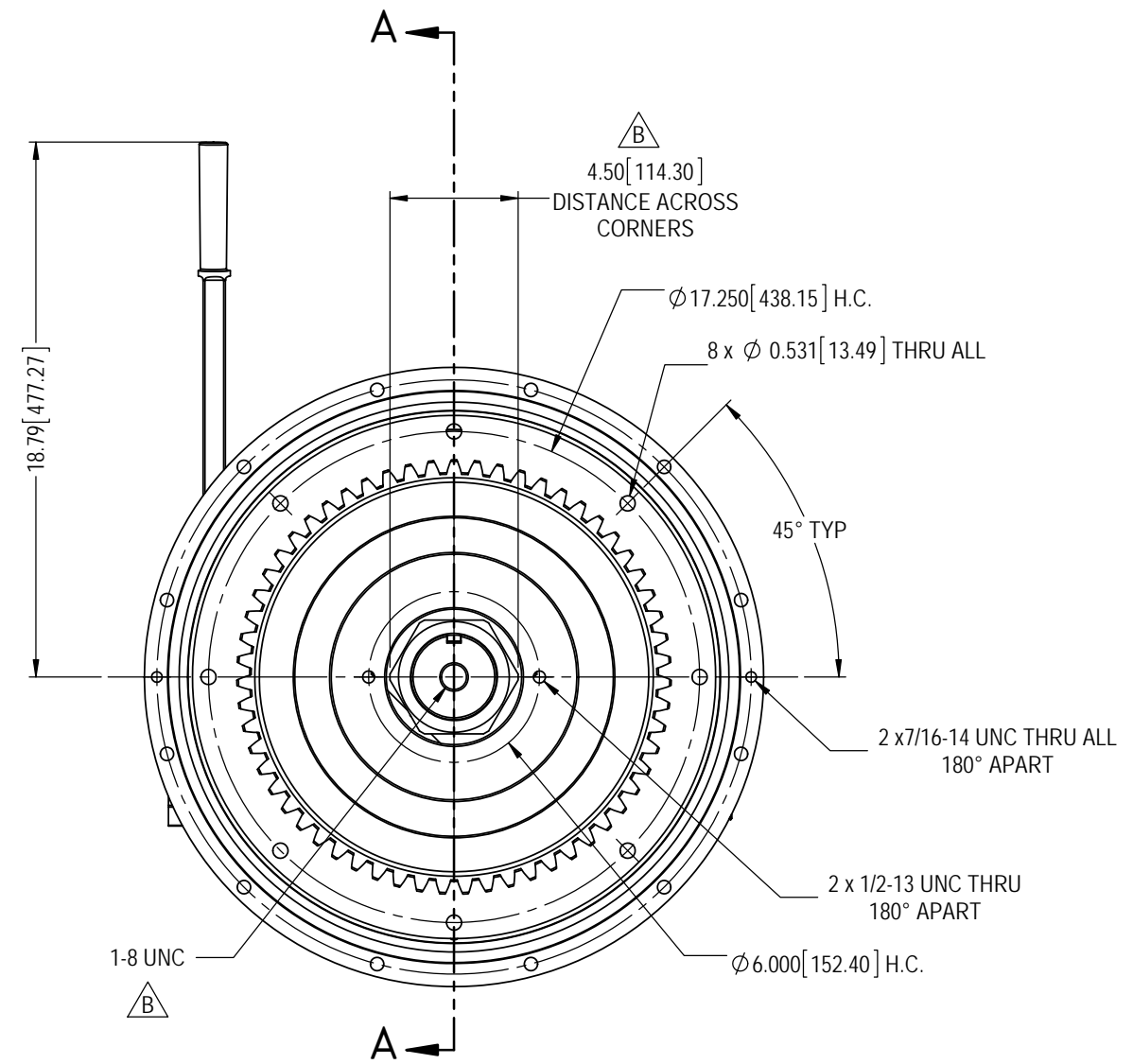
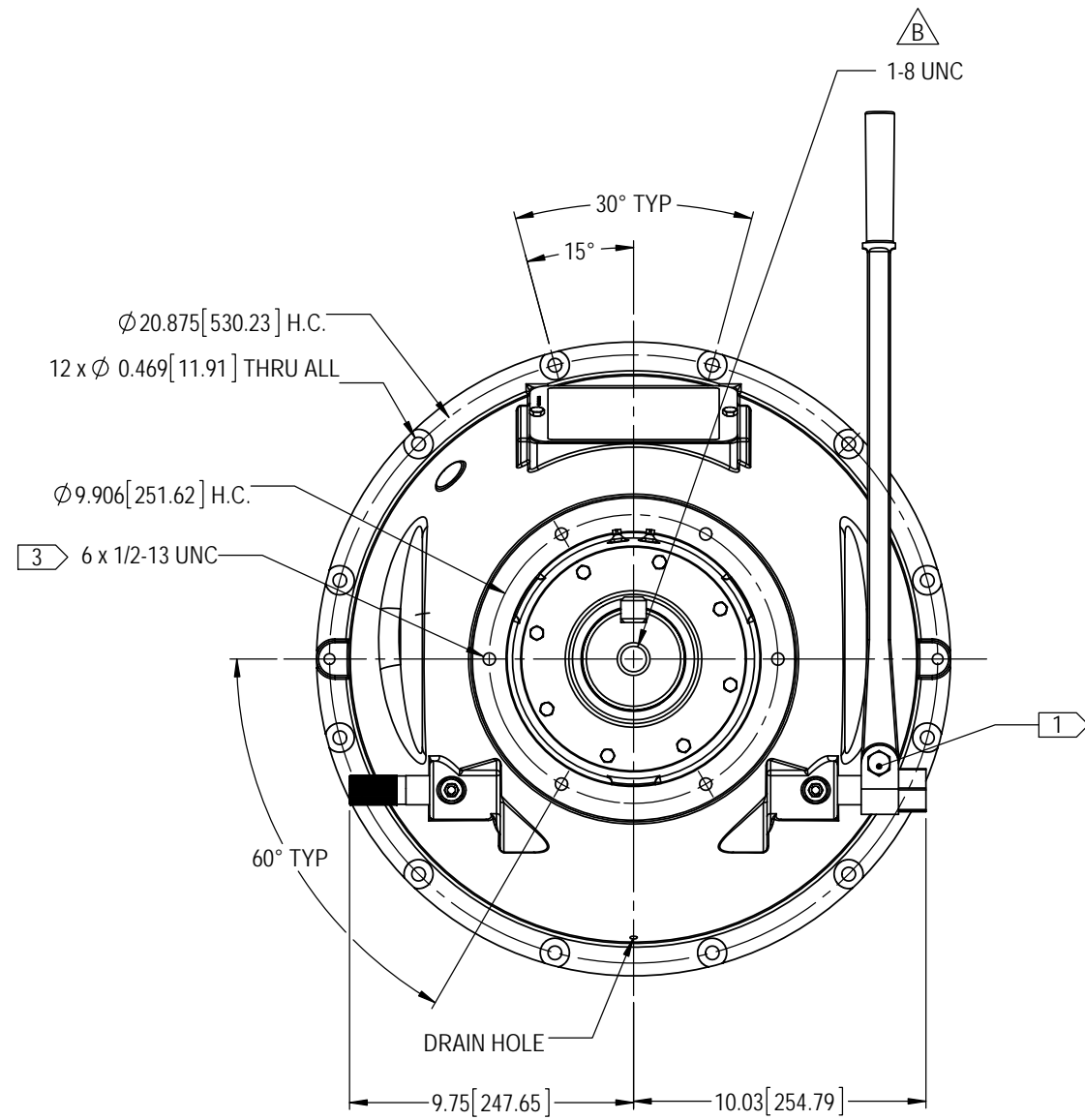
**TD STYLE 214 MECH PTO, SAE #1 BELLHOUSING, SEALED BALL BEARING COLLAR, PILOTLESS**


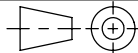
PART NUMBER: WTD-14-21H

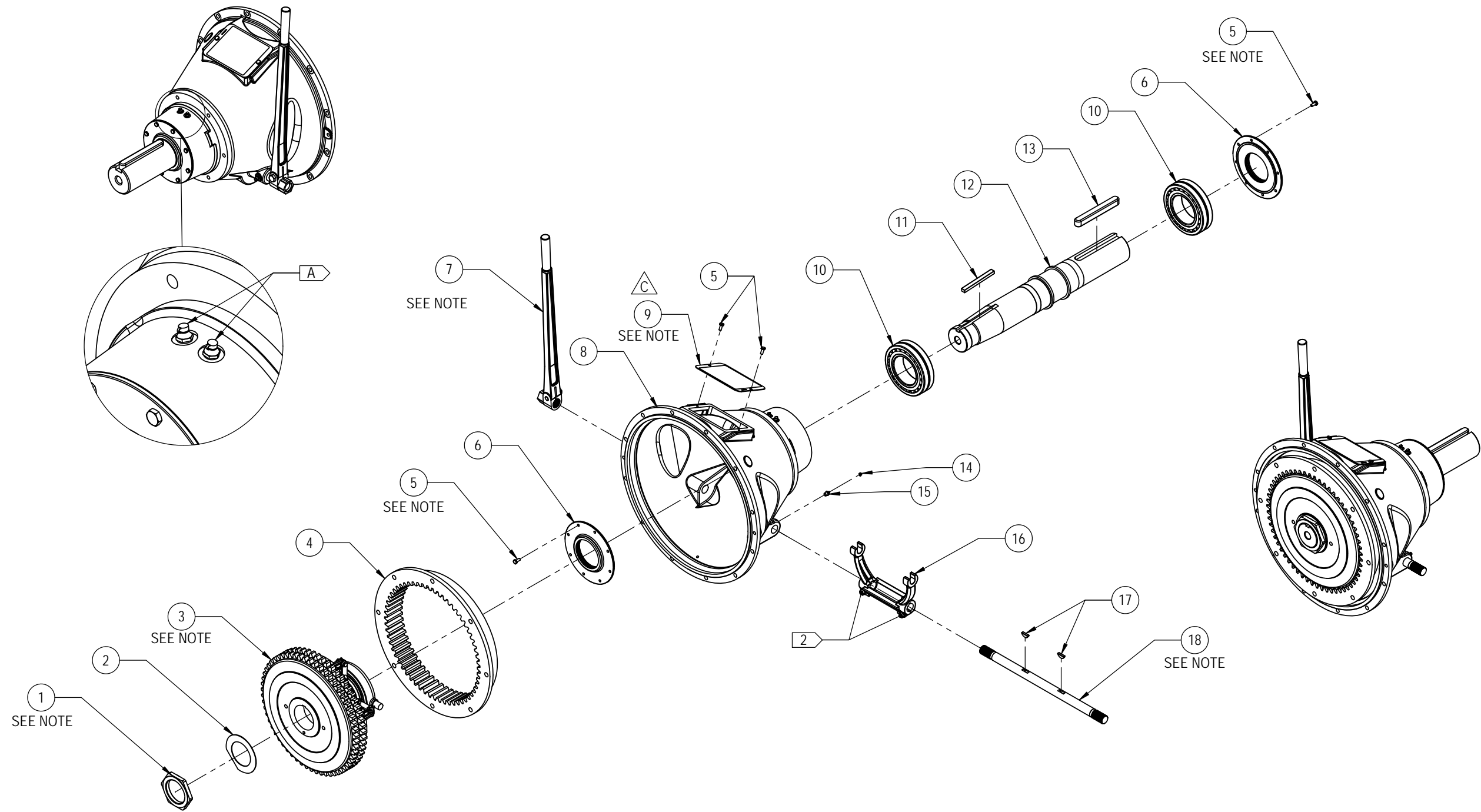
REVISION: D


SHEET: 1

OF: 3



|                            |                       |  |               |   |          |
|----------------------------|-----------------------|--|---------------|---|----------|
| UNLESS OTHERWISE SPECIFIED |                       | WPT POWER CORPORATION<br>ENGINEERING DRAWINGS<br>ARE NOT TO BE REPRODUCED<br>IN ANY FORM WHATSOEVER<br>WITHOUT AUTHORIZATION |               |  |          |
| Fractional                 | $\pm 1/64"$ [±.39]    | DRAWN  | DATE          |   |          |
| .x                         | $\pm .030"$ [±.76]    | RC   | 22 Sep 15     |   |          |
| .xx                        | $\pm .015"$ [±.38]    | CHECKED  | BDS 9/30/2015 |   |          |
| .xxx                       | $\pm .005"$ [±.127]   | APPROVED   | RDH 01 Oct 15 |   |          |
| Angles                     | $\pm 1/2^\circ$ [3.2] | ISSUED   | RC 02 Oct 15  | PART NUMBER   | REVISION |
| Corner Radii               | $\pm R 1/64"$         | THIRD ANGLE PROJECTION   |               | WTD-14-21H  | D        |
|                            |                       |   |               | SHEET   | OF       |
|                            |                       |  |               | 2   | 3        |



|                            |                            |  |               |   |          |   |    |
|----------------------------|----------------------------|--|---------------|---|----------|---|----|
| UNLESS OTHERWISE SPECIFIED |                            | WPT POWER CORPORATION<br>ENGINEERING DRAWINGS<br>ARE NOT TO BE REPRODUCED<br>IN ANY FORM WHATSOEVER<br>WITHOUT AUTHORIZATION |               |  |          |   |    |
| Fractional                 | $\pm 1/64"$ [ $\pm .39$ ]  | DRAWN  | DATE          |   |          | <b>TD STYLE 214 MECH PTO, SAE #1<br/>BELLHOUSING, SEALED BALL BEARING<br/>COLLAR, PILOTLESS</b> |    |
| .x                         | $\pm .030"$ [ $\pm .76$ ]  | RC   | 22 Sep 15     |   |          |   |    |
| .xx                        | $\pm .015"$ [ $\pm .38$ ]  | CHECKED  | BDS 9/30/2015 |   |          |   |    |
| .xxx                       | $\pm .005"$ [ $\pm .127$ ] | APPROVED   | RDH 01 Oct 15 |   |          |   |    |
| Angles                     | $\pm 1/2^\circ$ [ $3.2$ ]  | ISSUED   | RC 02 Oct 15  | PART NUMBER   | REVISION | SHEET   | OF |
| Corner Radii               | $\pm R 1/64"$              | THIRD ANGLE PROJECTION   |               | WTD-14-21H  | D        | 3   | 3  |