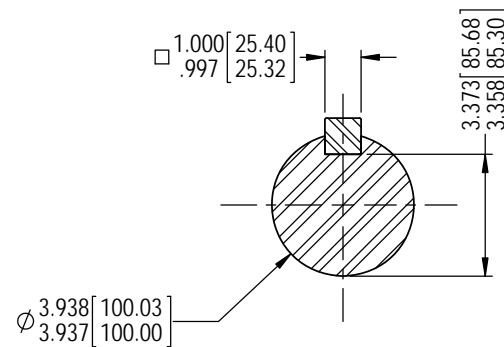


SECTION A-A



SECTION B-B

COMPLETE ASSEMBLY
EST WT = 433 lb [196 kg]

DRIVE RING & FRICTION DISCS
EST WT = 55.1 lb [25 kg]
EST WR² = 19.8 lb-ft² [0.832 kg-m²]

ALL ROTATING MEMBERS (PTO ENGAGED)
EST WR² = 23.3 lb-ft² [0.981 kg-m²]

③ ⑦ ⑨ ⑳

ADJUST CLUTCH UNTIL 218 TO 289 lbf-ft (295-391 N-m) TORQUE IS REQUIRED ON THE OPERATING SHAFT TO ENGAGE THE CLUTCH. STAMP NAMEPLATE ACCORDINGLY.

① TORQUE = 74-86 lbf-ft (100-116 N-m)

① TORQUE = 90-110 lbf-ft (122-149 N-m)

② APPLY LOCTITE 242 OR EQUAL

LUBRICATION: USE EP-2 LITHIUM BASE GREASE TO LUBRICATE BEARINGS. SEE NAMEPLATE FOR DETAILED INSTRUCTIONS.

⑤ APPLY LOCTITE 242 OR EQUAL

Ⓐ GREASE FILL HOUSING WITH 15.5 fl-oz [458 cm³], DISTRIBUTED EVENLY BETWEEN BOTH ZERKS.

MEETS SAE J617 STANDARD FOR BELLHOUSING

③ CLUTCH PACK INFORMATION

* SEE CLUTCH PACK DRAWING FOR OTHER IMPORTANT DETAILS. CONTACT A WPT REPRESENTATIVE FOR THIS DRAWING.

③ CUSTOMER SUPPLIED OUTBOARD SUPPORT PLATE IS REQUIRED FOR SIDELOAD APPLICATIONS AND RECOMMENDED FOR IN-LINE APPLICATIONS.

D	EC012196	14 Jan 16	RC
C	EC012145	31 Dec 15	RC
B	EC012050	08 Dec 15	TDC
REV	REVISIONS	DATE	BY

RPM	ALLOWABLE SIDE PULL - lb [kg]				
	"X" DISTANCE - in [mm]				
	16" [406]	18" [457]	20" [508]	22" [559]	24" [610]
2500	7970 [3615]	5721 [2595]	4463 [2024]	3658 [1659]	3099 [1406]
2300	8171 [3707]	5866 [2661]	4576 [2075]	3750 [1701]	3177 [1441]
2100	8398 [3809]	6029 [2735]	4702 [2133]	3854 [1748]	3265 [1481]
1800	8795 [3989]	6314 [2864]	4925 [2234]	4037 [1831]	3420 [1551]

UNLESS OTHERWISE SPECIFIED

Fractional	± 1/64"	[±.39]
.x	± .030"	[±.76]
.xx	± .015"	[±.38]
.xxx	± .005"	[±.127]
Angles	± 1/2°	[3.2]
Corner Radii	± R 1/64"	

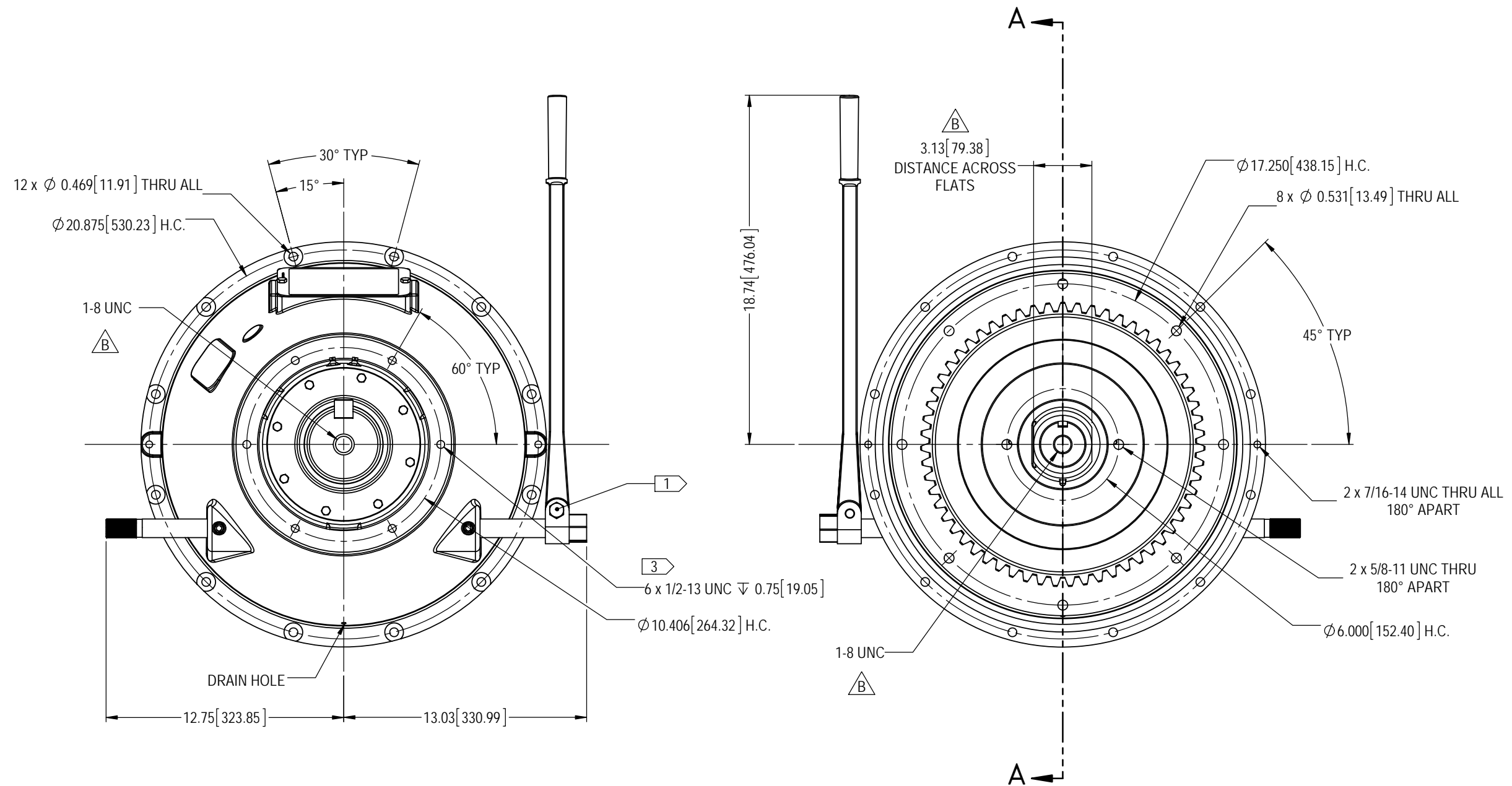
THIRD ANGLE PROJECTION

WPT POWER CORPORATION ENGINEERING DRAWINGS ARE NOT TO BE REPRODUCED IN ANY FORM WHATSOEVER WITHOUT AUTHORIZATION	
DRAWN RC	DATE 06 Oct 15
CHECKED RDH	DATE 09 Oct 15
APPROVED BDS	DATE 10/9/2015
ISSUED RC	DATE 09 Oct 15

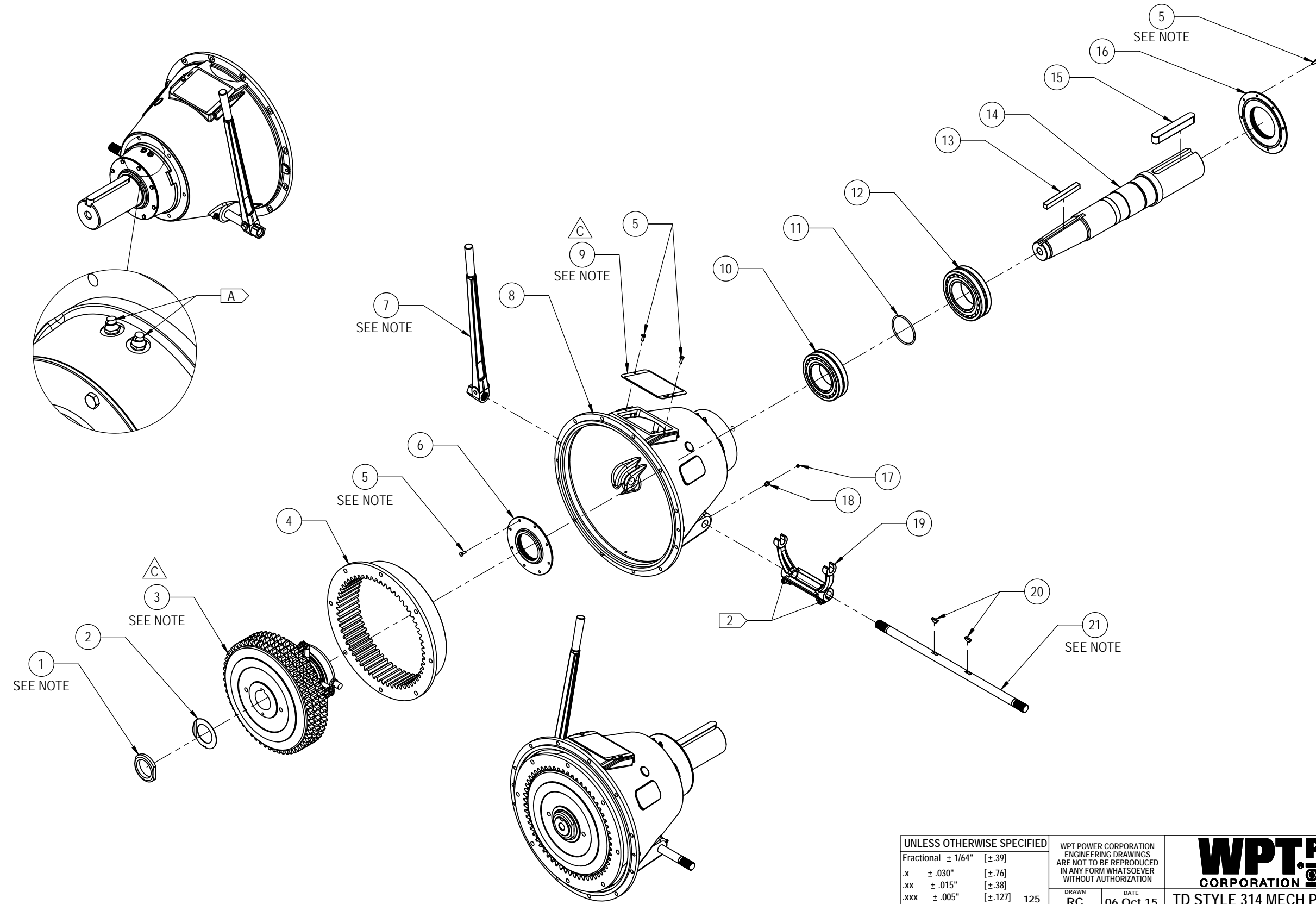




TD STYLE 314 MECH PTO, SAE #1
BELLHOUSING, SEALED BALL BEARING
COLLAR, PILOTLESS

PART NUMBER WTD-14-31T	REVISION D	SHEET 1	OF 3
---------------------------	---------------	------------	---------



UNLESS OTHERWISE SPECIFIED		WPT POWER CORPORATION ENGINEERING DRAWINGS ARE NOT TO BE REPRODUCED IN ANY FORM WHATSOEVER WITHOUT AUTHORIZATION		WPT POWER CORPORATION		
Fractional $\pm 1/64"$ [±.39]		DRAWN	DATE	TD STYLE 314 MECH PTO, SAE #1 BELLHOUSING, SEALED BALL BEARING COLLAR, PILOTLESS		
.x $\pm .030"$ [±.76]		RC	06 Oct 15			
.xx $\pm .015"$ [±.38]		CHECKED	RDH			09 Oct 15
.xxx $\pm .005"$ [±.127]	125	APPROVED	BDS			10/9/2015
Angles $\pm 1/2^\circ$ [3.2]		ISSUED	RC	09 Oct 15	PART NUMBER	
Corner Radii $\pm R 1/64"$				WTD-14-31T	REVISION	
THIRD ANGLE PROJECTION					SHEET	
					2	
					OF	
					3	



UNLESS OTHERWISE SPECIFIED		WPT POWER CORPORATION ENGINEERING DRAWINGS ARE NOT TO BE REPRODUCED IN ANY FORM WHATSOEVER WITHOUT AUTHORIZATION		
Fractional	$\pm 1/64"$ [$\pm .39$]	DRAWN	DATE	
.x	$\pm .030"$ [$\pm .76$]	RC	06 Oct 15	
.xx	$\pm .015"$ [$\pm .38$]	CHECKED	DATE	
.xxx	$\pm .005"$ [$\pm .127$]	RDH	09 Oct 15	
Angles	$\pm 1/2^\circ$ [3.2]	APPROVED	DATE	
Corner Radii	$\pm R 1/64"$	BDS	10/9/2015	PART NUMBER WTD-14-31T
THIRD ANGLE PROJECTION		ISSUED	DATE	
		RC	09 Oct 15	