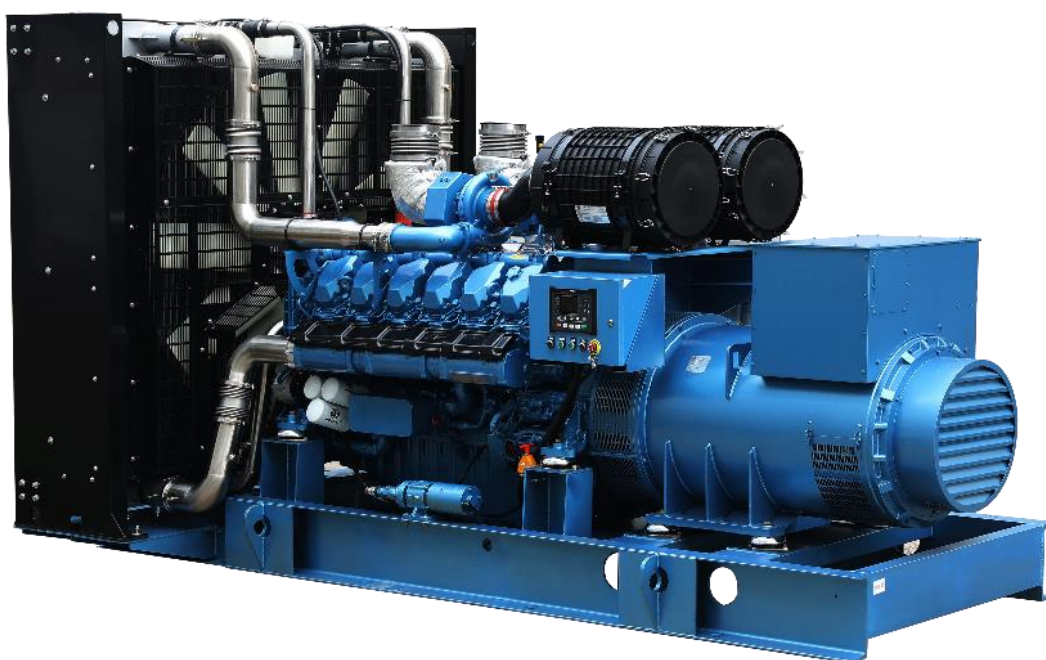


## Land Based Genset- 12M33 Series

### WPG1100 / WPG1320

1250-1500kVA, 1000-1200kWe Prime



[www.dinatek.ec](http://www.dinatek.ec)

## Engine

- Weichai / Baudouin 12M33 series, 12 cylinder, V-type 4 stroke, radiator cooled engine.
- Well-designed air handling system with
  - Dry type, Replaceable paper element air cleaner with restriction indicator
  - Air to air after cooling
  - Optimized turbocharger for increased altitude capabilities
  - High efficiency, large heat area intercooler, reduce the air temperature after the intercooler
- Fuel system with A1 class electronic governing
- Standard integral set-mounted radiator system, designed and tested for 50°C ambient temperature
- First fill of lube oil and coolant
- Electrical starter motor with soft start engagement feature
- Intelligent fuel injection technology to start fast guarantee
- Battery charging alternator
- 2 x 24V DC batteries

## Alternator

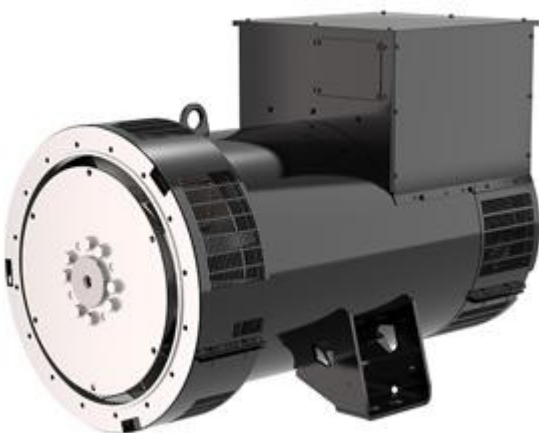
- Brushless type, Screen protected, Revolving field, Self excited alternator conforming to IS/IEC 60034-1
- Best in class efficiency
- Steel casing
- Compact design with sealed bearings for longer life and lesser maintenance
- IP23 standard protection level
- Impregnation on all wound components for better mechanical strength

## Control Module Specifications

### The DSE 7320 is an Auto Mains Failure Control Module

- Back-lit LCD display
- 3 Phase generator and 3 Phase Mains monitoring
- Monitoring speed, frequency, voltage, current, oil pressure, coolant temperature and fuel level
- Display warning, shutdown and engine status information
- Hours counter provides accurate information for monitoring and maintenance

**LEROY-SOMER**™



**DSE**®



## Technical Data

### Generator Set Specification

Model	WPG1100*76	WPG1320*76
Standby Rating kVA/kWe	1375/1100	1650/1320
Prime Rating kVA/kWe	1250/1000	1500/1200
Voltage V	440/240	440/240
Frequency Hz	60	60
Power Factor	0.8(lagging)	0.8(lagging)
No. of Phases	3	3

### Engine specification

Make	Baudouin	Baudouin
Mode	12M33G1100/6	12M33G1320/6
Rated Speed	1800	1800
Prime Power	1150	1350
Cooling	Liquid cooling	Liquid cooling
Governor	Electronic	Electronic
Aspiration	Turbocharging and intercooling	Turbocharging and intercooling
No. of cylinders	12	12
Bore (mm) x Stroke (mm)	150x185	150x185
Displacement (L)	39.2	39.2
Fuel consumption@75%(L/h)	171	190.7
Fuel consumption@100% (L/h)	230	258.6
Starting system	DC24V	DC24V
Total lubrication system capacity (L)	160	160
Total coolant capacity (L)	303	303
Cooling fan airflow (m <sup>3</sup> /min)	2100	2100
Exhaust Temperature (°C)	≤550	≤550
Recommended air flow @ PRP (m <sup>3</sup> /min)	68.7	76.3
Exhaust back pressure (mBar)	≤75	≤75
Radiator design temperature (°C)	45	45

### Alternator specification

Make	LEROY-SOMER	LEROY-SOMER
Alternator Frame	LSA 50.2 M6[1164]	LSA50.2L7[1244]
Exciter Type	Self-excitation	Self-excitation
Enclosure	IP23	IP23
Voltage regulation	≤±0.5%	≤±0.5%
Class of Insulation	H	H
Winding Pitch	2/3	2/3
Rotor	single	single

## Remarks

**Prime Rating:** These ratings are applicable for supplying continuous electrical power (at variable load) in the lieu of commercially purchased power. There is no limitation to the annual hours of operation and this model can supply 10% overload power for 1 hour in 12 hours.

**Standby Rating:** These ratings are applicable for supplying continuous electrical power (at variable load) in the event of a utility power failure. No overload is permitted on these ratings. The alternator on this model is peak continuous tested (as defined in ISO 8528-3).

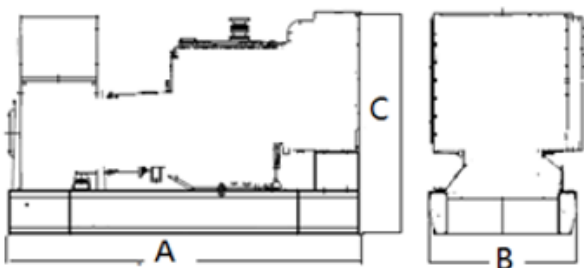
## Standard Reference Conditions

Note: Standard reference conditions 25°C(77°F) Air Inlet Temp, 100m(328 ft) A.S.L. 30% relative humidity. Fuel consumption data at full load with diesel fuel with specific gravity of 0.85 and conforming to BS2869: 1998, Class A2.

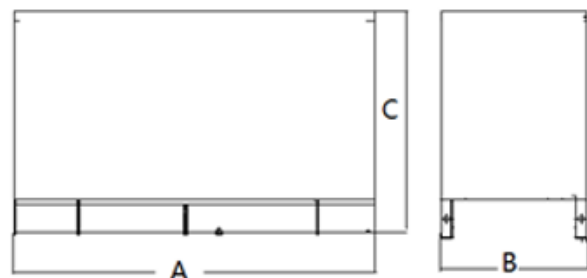
## Genset Dimensions (B: Open Series without Fuel Tank / C: Container mounted Series)

Genset Mode	Prime Rating (kVA)	Length A(mm)	Width B(mm)	Height C(mm)	Wet Weight (kg)	Standard Fuel tank Capacity (L)
WPG1100B76	1250	3525	2241.5	2255.9	8000	/
WPG1100C76	1250	20 feet Standard			33000	550L
WPG1320B76	1500	3525	2241.5	2255.9	8000	/
WPG1320C76	1500	20 feet Standard			33000	550L

Open genset



Enclosed genset



## Sales Promises

Each and every unit is strictly factory tested.

Warranty time: Prime duty 1 year or 1000Hours. Stand-by duty 2 years or 1000 hours.

Service and parts are available from Weichai Power or distributors in your location.

Distributed By:



Manufacturer: Weichai Heavy Machinery Co., Ltd  
Address: 197 A, Fushou East Street, High-Tech Development Zone, Weifang, China  
www.weichaihm.com

