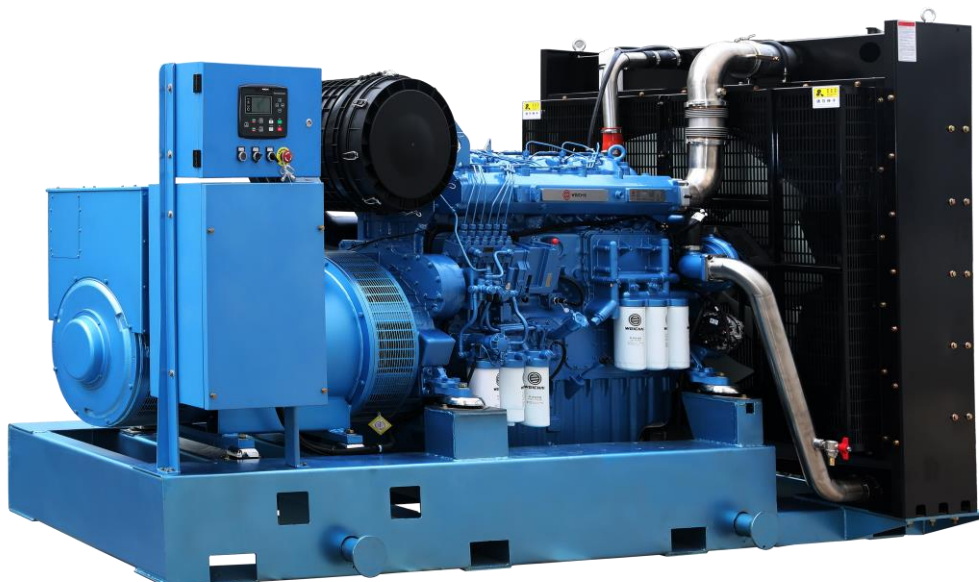


## Land Based Genset - 6M33 Series

### WPG550 / WPG600

625-680kVA, 500-550kWe Prime



**WEICHAI**



 **dinatek**

[www.dinatek.ec](http://www.dinatek.ec)

## Engine

- Weichai 6M33 series, 6 cylinder, in-line 4 stroke, radiator cooled engine
- Well-designed air handling system with
  - Dry type, Replaceable paper element air cleaner with restriction indicator
  - Air to air after cooling
  - Optimized turbocharger for increased altitude capabilities
  - High efficiency, large heat area intercooler, reduce the air temperature after the intercooler
- Fuel system with A1 class electronic governing
- Standard integral set-mounted radiator system, designed and tested for 50°C ambient temperature
- First fill of lube oil and coolant
- Electrical starter motor with soft start engagement feature
- Intelligent fuel injection technology to start fast guarantee
- Battery charging alternator
- 2 x 24V DC batteries

## Alternator

- Brushless type, Screen protected, Revolving field, Self excited alternator conforming to IS/IEC 60034-1
- Best in class efficiency
- Steel casing
- Compact design with sealed bearings for longer life and lesser maintenance
- IP23 standard protection level
- Impregnation on all wound components for better mechanical strength

## Control Module Specifications

### The DSE 7320 is an Auto Mains Failure Control Module

- Back-lit LCD display
- 3 Phase generator and 3 Phase Mains monitoring
- Monitoring speed, frequency, voltage, current, oil pressure, coolant temperature and fuel level
- Display warning, shutdown and engine status information
- Hours counter provides accurate information for monitoring and maintenance

**LEROY-SOMER**™



## Technical Data

### Generator Set Specification

<b>Model</b>	WPG550*76	WPG600*76
<b>Standby Rating kVA/kWe</b>	687.5/550	750/600
<b>Prime Rating kVA/kWe</b>	625/500	681/545
<b>Voltage V</b>	440/254	440/254
<b>Frequency Hz</b>	60	60
<b>Power Factor</b>	0.8(lagging)	0.8(lagging)
<b>No. of Phases</b>	3	3

### Engine specification

<b>Make</b>	Baudouin	Baudouin
<b>Mode</b>	6M33D633E201	6M33G600/6
<b>Rated Speed</b>	1800	1800
<b>Prime Power</b>	575	610
<b>Cooling</b>	Liquid (water + 50% antifreeze)	Liquid (water + 50% antifreeze)
<b>Governor</b>	Electronic	Electronic
<b>Aspiration</b>	Turbocharged and Aftercooled	Turbocharged and Aftercooled
<b>No. of cylinders</b>	6,in-lin	6,in-lin
<b>Bore (mm) x Stroke (mm)</b>	150x185	150x185
<b>Displacement (L)</b>	19.6	19.6
<b>Fuel consumption@75%(L/h)</b>	100	100
<b>Fuel consumption@100% (L/h)</b>	136	136
<b>Starting system</b>	24VDC Electrical	24VDC Electrical
<b>Total lubrication system capacity (L)</b>	61	61
<b>Total coolant capacity (L)</b>	159	159
<b>Air consumption (m<sup>3</sup>/h)</b>	2400	2400
<b>Exhaust Temperature (°C)</b>	≤550	≤550
<b>Exhaust back pressure (mBar)</b>	≤75	≤75
<b>Radiator design temperature (°C)</b>	50	50

### Alternator specification

<b>Make</b>	LEROY-SOMER	LEROY-SOMER
<b>Alternator Frame</b>	TAL-A47-D	TAL-A47-E
<b>Exciter Type</b>	Self-excitation	Self-excitation
<b>Enclosure</b>	IP23	IP23
<b>Voltage regulation</b>	±1%	±1%
<b>Class of Insulation</b>	H	H
<b>Winding Pitch</b>	2/3	2/3
<b>Rotor</b>	Single bearing	Single bearing

## Remarks

**Prime Rating:** These ratings are applicable for supplying continuous electrical power (at variable load) in the lieu of commercially purchased power. There is no limitation to the annual hours of operation and this model can supply 10% overload power for 1 hour in 12 hours.

**Standby Rating:** These ratings are applicable for supplying continuous electrical power (at variable load) in the event of a utility power failure. No overload is permitted on these ratings. The alternator on this model is peak continuous tested (as defined in ISO 8528-3).

### Standard Reference Conditions

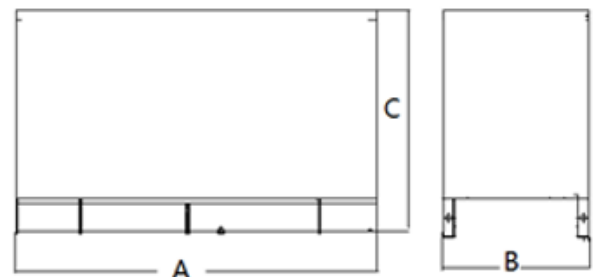
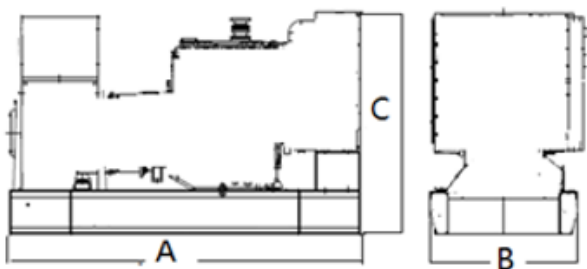
Note: Standard reference conditions 25°C(77°F) Air Inlet Temp, 100m(328 ft) A.S.L. 30% relative humidity. Fuel consumption data at full load with diesel fuel with specific gravity of 0.85 and conforming to BS2869: 1998, Class A2.

## Genset Dimensions (F: Open Series with fuel base tank / B Open without Fuel Tank / L: Silent Canopy Series)

Genset Mode	Prime Rating (kVA)	Length A(mm)	Width B(mm)	Height C(mm)	Wet Weight (kg)	Standard Fuel tank Capacity (L)
WPG550B76	625	3750	1680	2100	5300	\
WPG550F76	625	3750	1680	2210	5500	700
WPG550L76	625	5300	2180	2300	8000	650
WPG600B7	625	3750	1680	2100	5300	\
WPG600F7	625	3750	1680	2210	5500	700
WPG600L7	625	5300	2180	2300	8000	650

Open genset

Enclosed genset



## Sales Promises

Each and every unit is strictly factory tested.

Warranty time: Prime duty 1 year or 1000Hours. Stand-by duty 2 years or 1000 hours.

Service and parts are available from Weichai Power or distributors in your location.

Distributed By:



Manufacturer: Weichai Heavy Machinery Co., Ltd

Address: 197 A, Fushou East Street, High-Tech Development Zone, Weifang, China

www.weichaihm.com

