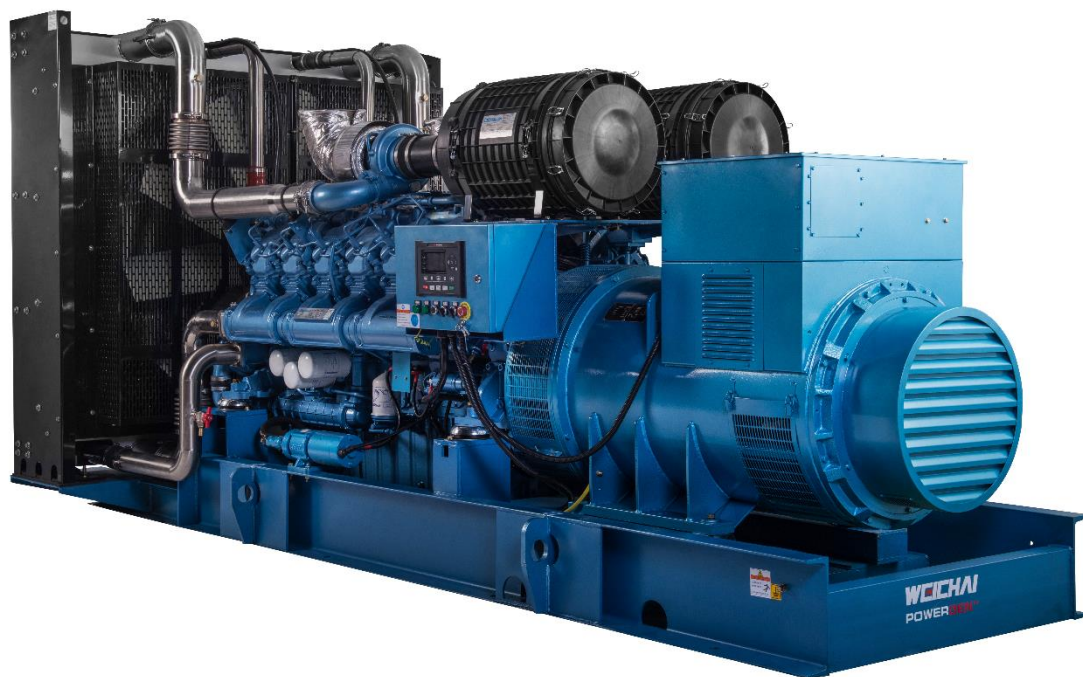


Land Based Genset- 12M26 Series

WPG700 / WPG800 / WPG900 / WPG1000

875-1250kVA, 700-1000kW Stand-By



www.dinatek.ec

Engine

- Weichai / Baudouin 12M26 series, 12 cylinder, V-type 4 stroke, radiator cooled engine.
- Well-designed air handling system with
 - Dry type, Replaceable paper element air cleaner with restriction indicator
 - Air to air after cooling
 - Optimized turbocharger for increased altitude capabilities
 - High efficiency, large heat area intercooler, reduce the air temperature after the intercooler
- Fuel system with A1 class electronic governing
- Standard integral set-mounted radiator system, designed and tested for 50°C ambient temperature
- First fill of lube oil and coolant
- Electrical starter motor with soft start engagement feature
- Intelligent fuel injection technology to start fast guarantee
- Battery charging alternator
- 2 x 24V DC batteries

Alternator

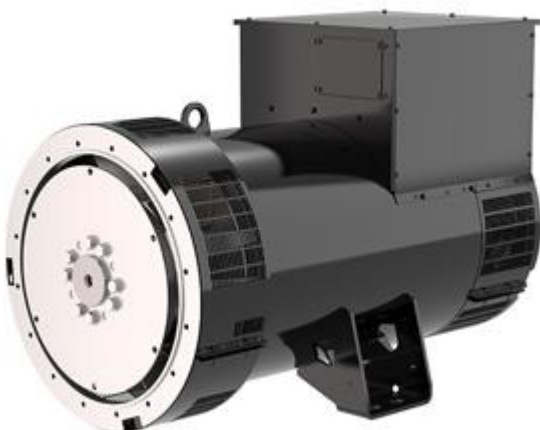
- Brushless type, Screen protected, Revolving field, Self excited alternator conforming to IS/IEC 60034-1
- Best in class efficiency
- Steel casing
- Compact design with sealed bearings for longer life and lesser maintenance
- IP23 standard protection level
- Impregnation on all wound components for better mechanical strength

Control Module Specifications

The DSE 7320 is an Auto Mains Failure Control Module

- Back-lit LCD display
- 3 Phase generator and 3 Phase Mains monitoring
- Monitoring speed, frequency, voltage, current, oil pressure, coolant temperature and fuel level
- Display warning, shutdown and engine status information
- Hours counter provides accurate information for monitoring and maintenance

LEROY-SOMER™



Technical Data

Generator Set Specification

Model	WPG700*76	WPG800*76
Standby Rating kVA/kWe	875/700	1000/800
Prime Rating kVA/kWe	800/640	906/725
Voltage V	440/254	440/254
Frequency Hz	60	60
Power Factor	0.8(lagging)	0.8(lagging)
No. of Phases	3	3

Engine specification

Make	Baudouin	Baudouin
Mode	12M26G704/6	12M26G800/6
Rated Speed	1800	1800
Prime Power	720	820
Cooling	Liquid (water + 50% antifreeze)	Liquid (water + 50% antifreeze)
Governor	Electronic	Electronic
Aspiration	Turbocharged and Aftercooled	Turbocharged and Aftercooled
No. of cylinders	12,V-type	12,V-type
Bore (mm) x Stroke (mm)	150x150	150x150
Displacement (L)	31.8	31.8
Fuel consumption@75%(L/h)	127	147
Fuel consumption@100% (L/h)	165	195
Starting system	24VDC Electrical	24VDC Electrical
Total lubrication system capacity (L)	109	109
Total coolant capacity (L)	154	154
Air consumption (m ³ /h)	3422	4176
Exhaust Temperature (°C)	≤550	≤550
Exhaust back pressure (mBar)	≤75	≤75
Radiator design temperature (°C)	50	50

Alternator specification

Make	LEROY-SOMER	LEROY-SOMER
Alternator Frame	TAL-A49-B	TAL-A49-C
Exciter Type	Self-excitation	Self-excitation
Enclosure	IP23	IP23
Voltage regulation	±1%	±1%
Class of Insulation	H	H
Winding Pitch	2/3	2/3
Rotor	Single bearing	Single bearing

Generator Set Specification

Model	WPG900*76	WPG1000*76
Standby Rating kVA/kWe	1125/900	1250/1000
Prime Rating kVA/kWe	1025/820	/
Voltage V	440/254	440/254
Frequency Hz	60	60
Power Factor	0.8(lagging)	0.8(lagging)
No. of Phases	3	3

Engine specification

Make	Baudouin	Baudouin
Mode	12M26G900/6	12M26G1000/6
Rated Speed	1800	1800
Prime Power	920	/
Cooling	Liquid (water + 50% antifreeze)	Liquid (water + 50% antifreeze)
Governor	Electronic	Electronic
Aspiration	Turbocharged and Aftercooled	Turbocharged and Aftercooled
No. of cylinders	12,V-type	12,V-type
Bore (mm) x Stroke (mm)	150x150	150x150
Displacement (L)	31.8	31.8
Fuel consumption@75%(L/h)	160	194
Fuel consumption@100% (L/h)	212	258
Starting system	24VDC Electrical	24VDC Electrical
Total lubrication system capacity (L)	109	109
Total coolant capacity (L)	154	154
Air consumption (m ³ /h)	4298	4410
Exhaust Temperature (°C)	≤550	≤550
Exhaust back pressure (mBar)	≤75	≤75
Radiator design temperature (°C)	50	50

Alternator specification

Make	LEROY-SOMER	LEROY-SOMER
Alternator Frame	LSA 49.3 L9	LSA 50.2 M6
Exciter Type	Self-excitation	Self-excitation
Enclosure	IP23	IP23
Voltage regulation	±1%	±1%
Class of Insulation	H	H
Winding Pitch	2/3	2/3
Rotor	Single bearing	Single bearing

Remarks

Prime Rating: These ratings are applicable for supplying continuous electrical power (at variable load) in the lieu of commercially purchased power. There is no limitation to the annual hours of operation and this model can supply 10% overload power for 1 hour in 12 hours.

Standby Rating: These ratings are applicable for supplying continuous electrical power (at variable load) in the event of a utility power failure. No overload is permitted on these ratings. The alternator on this model is peak continuous tested (as defined in ISO 8528-3).

Standard Reference Conditions

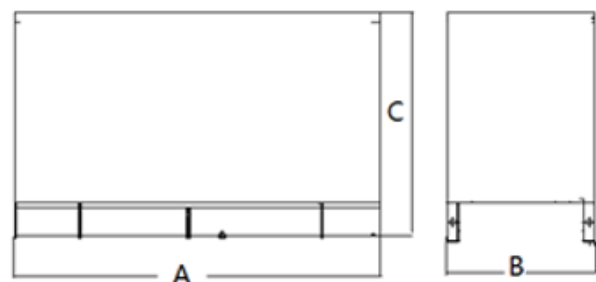
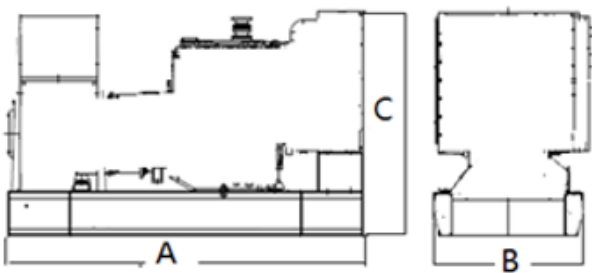
Note: Standard reference conditions 25°C(77°F) Air Inlet Temp, 100m(328 ft) A.S.L. 30% relative humidity. Fuel consumption data at full load with diesel fuel with specific gravity of 0.85 and conforming to BS2869: 1998, Class A2.

Genset Dimensions (B: Open Series without Fuel Tank / C: Container mounted Series)

Genset Mode	Prime Rating (kVA)	Length A(mm)	Width B(mm)	Height C(mm)	Wet Weight (kg)	Standard Fuel tank Capacity (L)
WPG700B76	800	4350	1992	2200	7200	\
WPG700C76	800	6058	2438	2591	10500	750
WPG800B76	906	4350	1992	2200	7500	\
WPG800C76	906	6058	2438	2591	10800	750
WPG900B76	1025	4350	1992	2200	7600	\
WPG900C76	1025	6058	2438	2591	11000	750

Open genset

Enclosed genset



Sales Promises

Each and every unit is strictly factory tested.

Warranty time: Prime duty 1 year or 1000Hours. Stand-by duty 2 years or 1000 hours.

Service and parts are available from Weichai Power or distributors in your location.

Distributed By:



Manufacturer: Weichai Heavy Machinery Co., Ltd
Address: 197 A, Fushou East Street, High-Tech Development Zone, Weifang, China
www.weichaihm.com

