

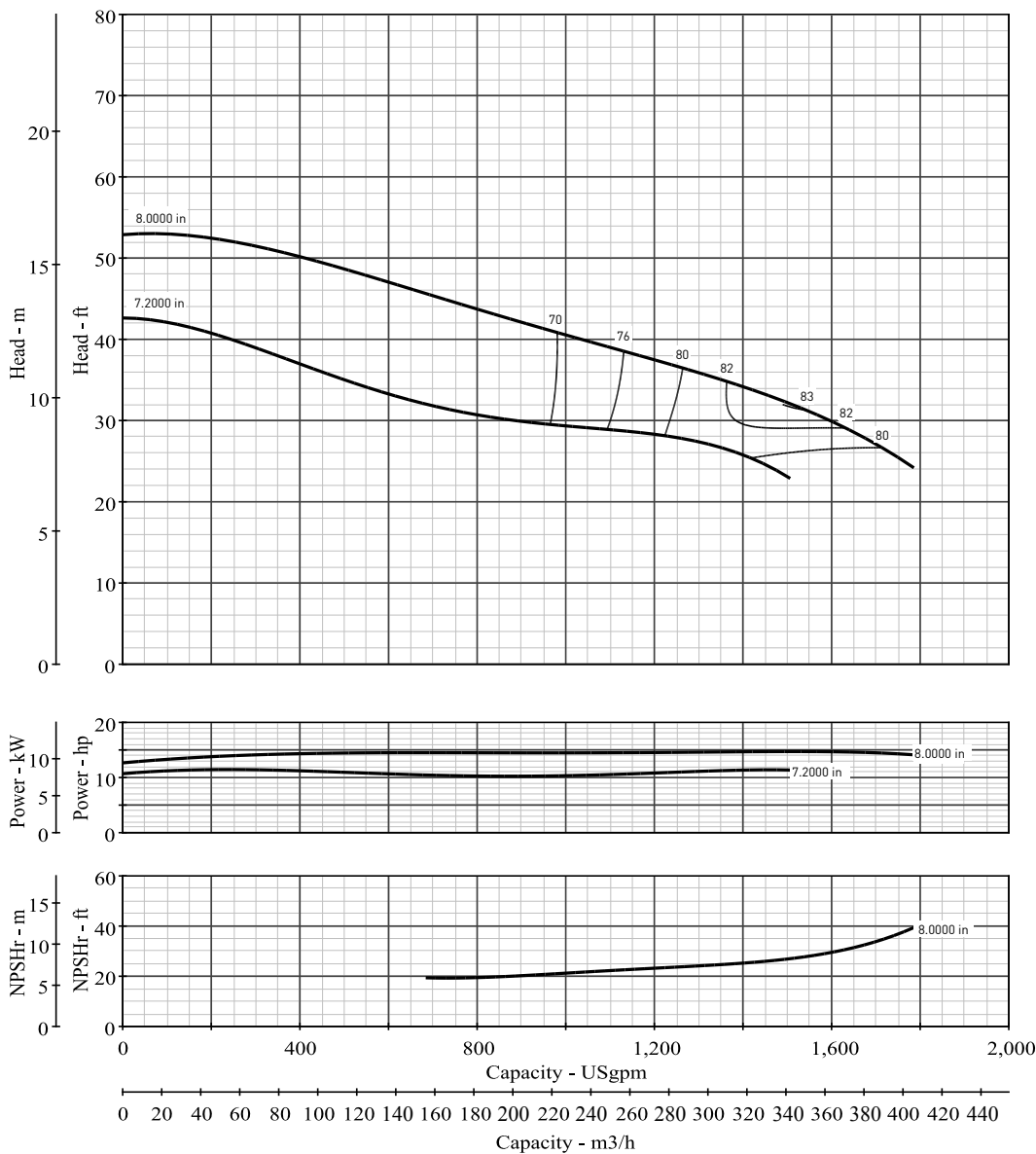
# BERKELEY®

## VERTICAL LINESHAFT TURBINES

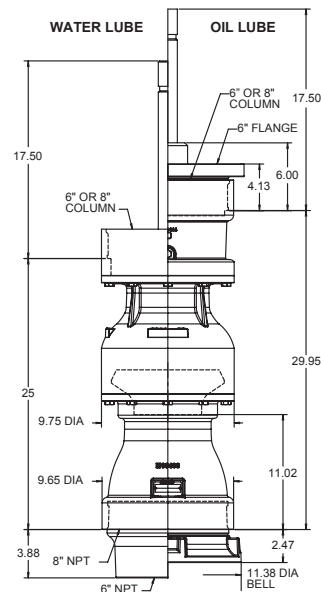
No. Stages	Eff.
1	-2.5
2	-1
3	-0.5
4	0

**10VT1500** CLOSED IMPELLER 1770 R.P.M.

SINGLE STAGE LAB PERFORMANCE WITH STANDARD MATERIALS. EFFICIENCY SHOWN FOR 4 OR MORE STAGES. HORSE POWER SHOWN FOR ONE STAGE BASED ON 4 STAGE EFFICIENCY. CORRECTIONS SHOULD BE MADE FOR STAGES AND MATERIAL



Maximum Operation Speed - RPM	1800	Maximum Sphere Size - inch	0.99
Pump Shaft Diameter - inch	1.500	Thrust Factor - Kt	10.54
Bowl Weight, 1st Stg W/L - lbs	178	WR2	0.793
Bowl Weight, 1st Stg O/L - lbs	206	Running Position (Above Seat) - inch	0.200
Bowl Weight, Ea. Add Stage - lbs	76	Submergence - inch	47
Allowable Shaft Stretch - inch	1.25	Max Bowl Brg Clearance - in. dia	0.014
Std Max Working Pressure - PSI	400	Max Wear Ring Clearance - in. dia	0.015
Optional Max Working Pressure - PSI	700	Max Bowl O.D. - inch	9.75
Impeller Eye Area - Sq. In	28.57	Suction Bell O.D. - inch	11.38
Rotor Weight 1st/add stages - lbs	33/16	Standard Max Number Stages	13
Additional Length Per Stage - inch	11.5	Optional Max Number Stages	17
Discharge Thread Column - inch	8	Suction Threads NPT - inch	8



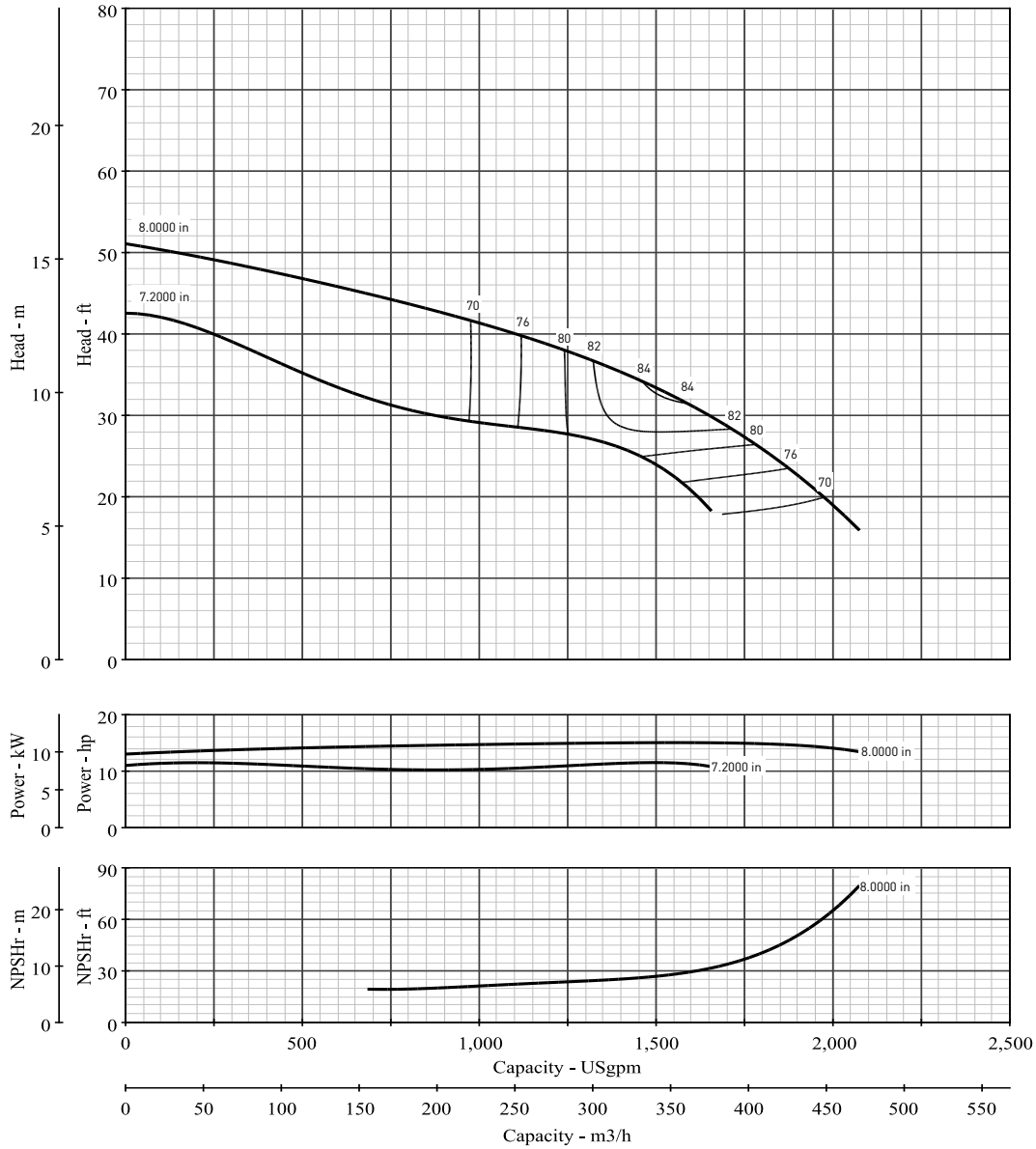
# BERKELEY®

## VERTICAL LINESHAFT TURBINES

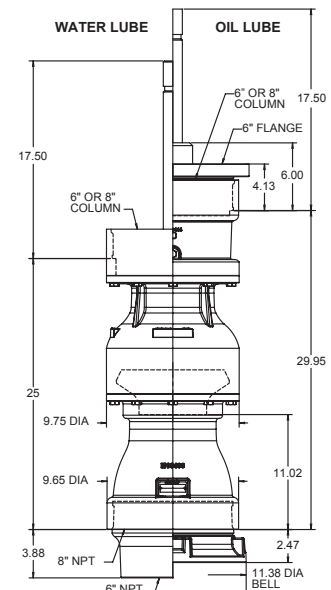
No. Stages	Eff.
1	-2.5
2	-1
3	-0.5
4	0

### 10VT1500K SEMI-OPEN IMPELLER 1770 R.P.M.

SINGLE STAGE LAB PERFORMANCE WITH STANDARD MATERIALS. EFFICIENCY SHOWN FOR 4 OR MORE STAGES. HORSE POWER SHOWN FOR ONE STAGE BASED ON 4 STAGE EFFICIENCY. CORRECTIONS SHOULD BE MADE FOR STAGES AND MATERIAL



Maximum Operation Speed - RPM	1800	Maximum Sphere Size - inch	0.99
Pump Shaft Diameter - inch	1.500	Thrust Factor - Kt	10.89
Bowl Weight, 1st Stg W/L - lbs	178	WR <sup>2</sup>	0.793
Bowl Weight, 1st Stg O/L - lbs	206	Running Position (Above Seat) - inch	0.200
Bowl Weight, Ea. Add Stage - lbs	76	Submergence - inch	47
Allowable Shaft Stretch - inch	1.25	Max Bowl Brg Clearance - in. dia	0.014
Std Max Working Pressure - PSI	400	Max Wear Ring Clearance - in. dia	0.015
Optional Max Working Pressure - PSI	700	Max Bowl O.D. - inch	9.75
Impeller Eye Area - Sq. In	28.57	Suction Bell O.D. - inch	11.38
Rotor Weight 1st/add stages - lbs	29/12	Standard Max Number Stages	9
Additional Length Per Stage - inch	11.5		
Discharge Thread Column - inch	8	Suction Threads NPT - inch	8



293 WRIGHT STREET, DELAVAN, WI 53115 WWW.BERKELEYPUMPS.COM  
PH: 888-237-5353 ORDERS FAX: 800-321-8793

Because we are continuously improving our products and services,  
Pentair reserves the right to change specifications without prior notice.

B12482BK (04/26/18) © 2018 Pentair plc. All Rights Reserved.