



GE INDUSTRIAL MOTORS
a **WOLONG** company

Product Information Packet

September 23, 2022

Data shown is for the current revision model #. Ensure your nameplate model # matches.

Model Number:	5KFS203ZWL2043
Catalog Number:	WI211
Instruction Manual:	GEI-M1052-SP
Connection Diagram:	886070022200
Outline Drawing:	358B6967AA

Accessory Connection Diagrams

Bearing Thermocouple:	None	Heater:	None
RTD:	None	Thermistor:	886070014200
Thermostat:	None	Winding Thermocouple:	None
Bearing RTD:	None		

Table of Contents

Specification	01
Performance Characteristics	02
Outline Drawing	03
Connection Drawing(s)	04

Marks:

MODEL NUMBER:	5KFS203ZWL2043	Estimated Weight(kg):	268
Outline Drawing:	358B6967AA	Duty:	S1
Connection Diagram:	886070022200	Enclosure:	TEFC
Connection:	2DELTA / 2WYE / DELTA	Encl Construction:	Energy Saver
Instruction Book:	GEI-M1052-SP	Cooling (IC):	411
Design Code:	NA	Protection (IP):	55
Type:	KFS	Ambient Max (°C):	40
Frame:	200L	Alt Ambient Max(°C):	--
Mounting (IM):	B3	Ambient Min(°C):	-15
Phases:	3	Insulation Class:	F
Poles:	4	IEC Design:	N
Output Power :	40HP/30kW	Nominal Efficiency (%):	IE3-94.1
RPM:	1770	Guaranteed Efficiency (%):	93.2
Voltage(V):	220/380/440	Power Factor (%):	86.0
Hertz:	60	Bearing - DE:	6312/2Z C3
Amps - FL:	97.3/56.3/48.6	Bearing - ODE:	6212/2Z C3
Service Factor:	1.15	Vibration (mm/s) rms:	2.8
Alt Service Factor:	--		

Enclosure is Totally Enclosed Fan-Cooled

Stamped Nameplate Notes:Additional Information:

SUITABLE FOR DOL STARTING
 ROTATION: CW VIEWED FROM DE
 INVERTER DUTY PER IEC TS 60034-25, SECTION 18
 INVERTER RATED PWM 20:1 VARIABLE TORQUE, 1.0 SF



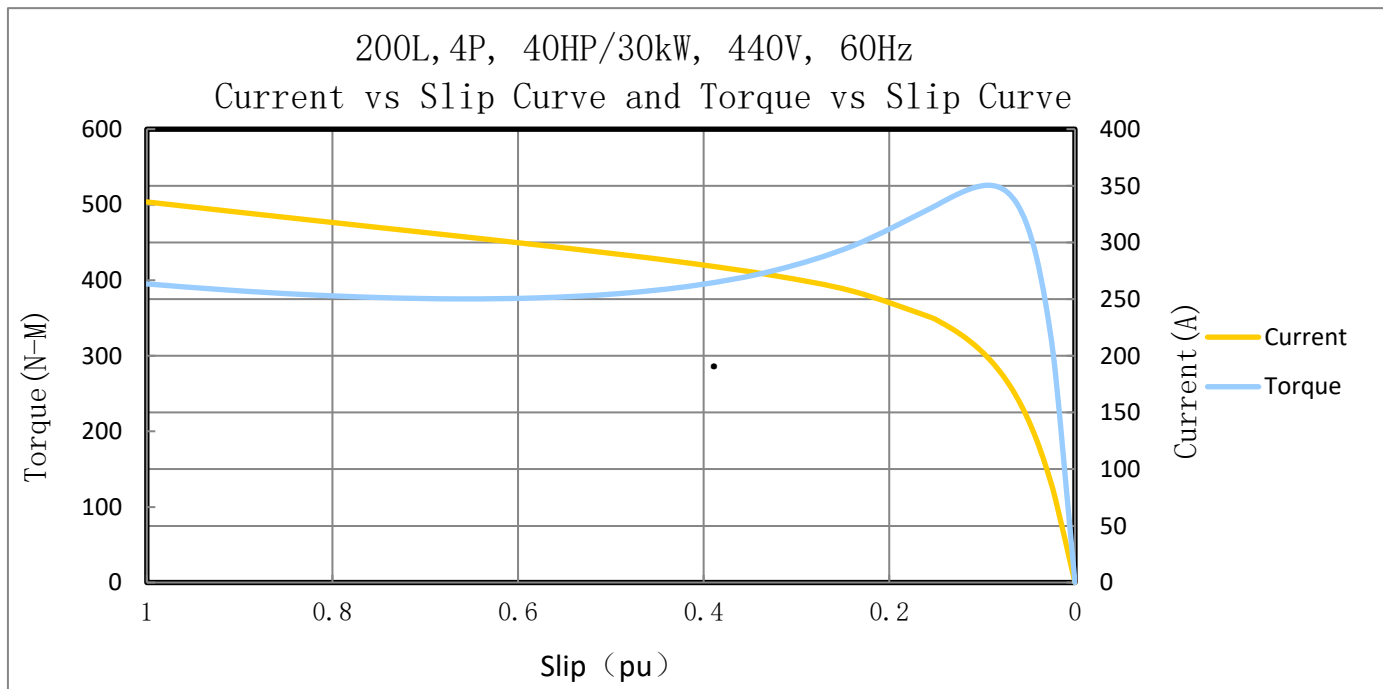
Performance Characteristic:

LOAD %	125.0	115.0	100.0	75.0	50.0	25.0	0.0
% EFF	93.70	93.89	94.13	94.3	93.89	91.41	0
% PF	88.99	88.50	87.40	83.53	74.60	52.07	25.94
AMPS	58.9	54.4	47.8	37.4	28.0	20.6	17.6

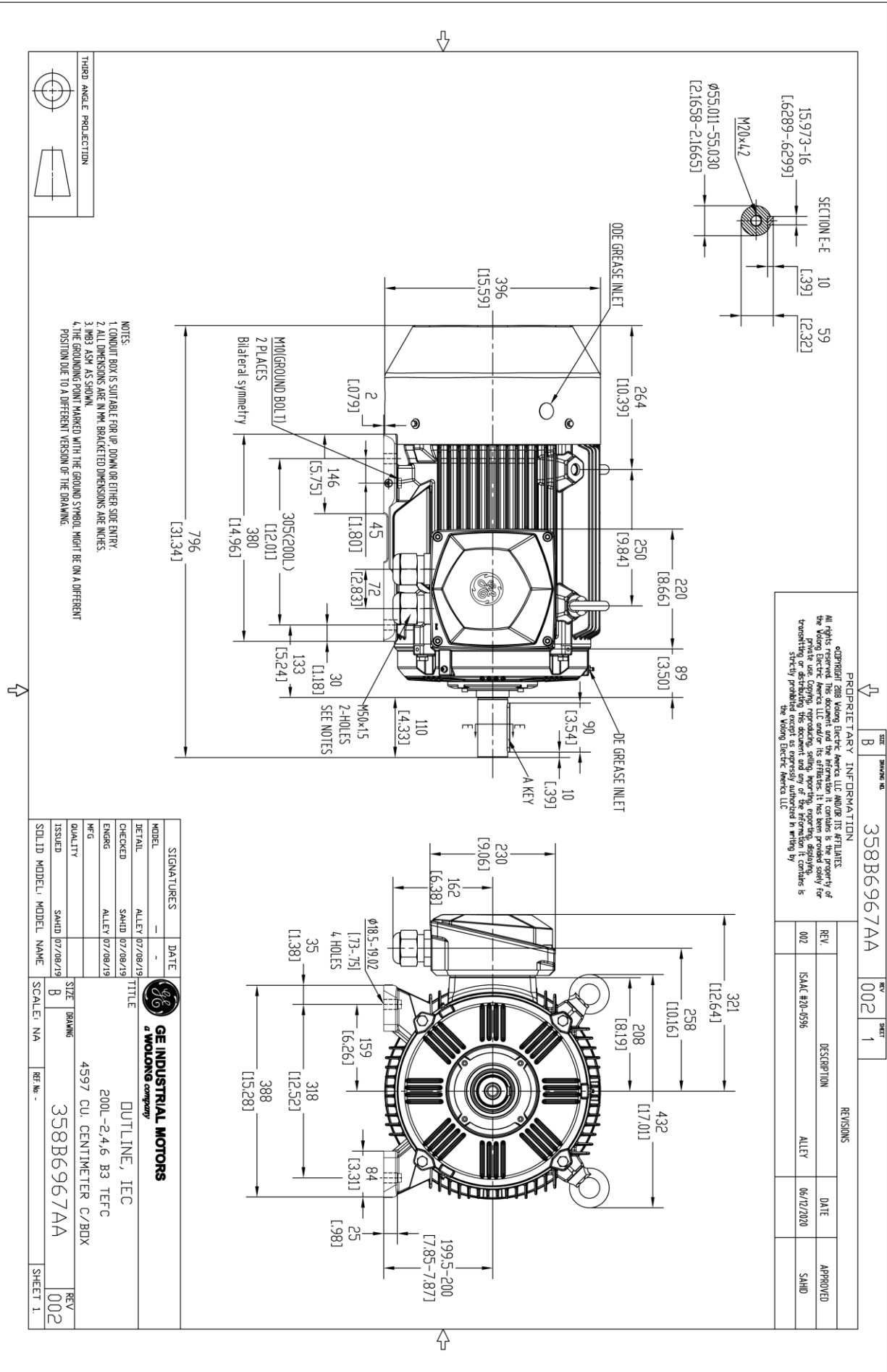
TORQUE(FL) N-m 161.9 TORQUE(LR)%FL 244.1 TORQUE(BD)%FL 319.6
 AMPS(LR 440V) 335.8 PF AT START 25.94%

Other Useful Information for Application:

Rotor Inertia (Kg-m ²) :	0.42
Max load inertia (Kg-m ²):	7.964
Load Type:	Square Torque/Speed Characteristic
Voltage:	100%
Number of starts per hour:	2 Cold or 1 Hot
Acceleration Time with maximum inertia (sec):	2.96
Safe stall time (sec): Cold/Hot	28.2/11.5



Marks:



PROPRIETARY INFORMATION

Copyright 2018 Wolog Electric America, LLC. All rights reserved. This document and the information it contains is the property of Wolog Electric America, LLC and/or its affiliates. It has been provided solely for private use. Copying, reproducing, selling, importing, exporting, displaying, transmitting or otherwise making available this document and any of the information it contains is strictly prohibited by Wolog Electric America, LLC.

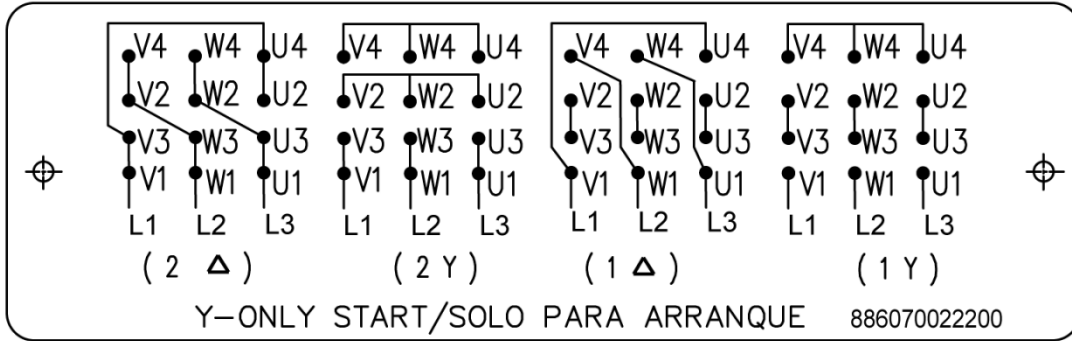
SIZE	B	SCALE	1
REV	002	REV	1
DESCRIPTION	ISAC #20-0596	DATE	06/12/2020
REVISIONS	ALLEY	APPROVED	SAHD

SIGNATURES	DATE	 GE INDUSTRIAL MOTORS <i>a WOLOG company</i>	TITLE
MODEL	ALLEY 07/08/19		OUTLINE, IEC
CHECKED	SAHD 07/08/19		200L-2.4.6 B3 TEFC
ENGINEER	ALLEY 07/08/19		4597 CU. CENTIMETER C/BOX
ISSUED	SAHD 07/08/19	SIZE	DRAWING
SOLID MODEL	MODEL NAME	SCALE	NA
		REV	002
		SHEET	1

Marks:

Connection Diagram

886070022200



PTC Diagram

886070014200

