



**GE INDUSTRIAL MOTORS**  
a **WOLONG** company

# Product Information Packet

September 13, 2022

Data shown is for the current revision model #. Ensure your nameplate model # matches.

<b>Model Number:</b>	<b>5KFS103ZWL2034</b>
<b>Catalog Number:</b>	<b>WI202</b>
<b>Instruction Manual:</b>	GEI-M1052-SP
<b>Connection Diagram:</b>	886070022000
<b>Outline Drawing:</b>	358B6962AA

## Accessory Connection Diagrams

<b>Bearing Thermocouple:</b>	None	<b>Heater:</b>	None
<b>RTD:</b>	None	<b>Thermistor:</b>	886070014000
<b>Thermostat:</b>	None	<b>Winding Thermocouple:</b>	None
<b>Bearing RTD:</b>	None		

## Table of Contents

Specification	01
Performance Characteristics	02
Outline Drawing	03
Connection Drawing(s)	04

Marks:

<b>MODEL NUMBER:</b>	<b>5KFS103ZWL2034</b>	<b>Estimated Weight(kg):</b>	38
<b>Outline Drawing:</b>	358B6962AA	<b>Duty:</b>	S1
<b>Connection Diagram:</b>	886070022000	<b>Enclosure:</b>	TEFC
<b>Connection:</b>	2WYE / WYE	<b>Encl Construction:</b>	Energy Saver
<b>Instruction Book:</b>	GEI-M1052-SP	<b>Cooling (IC):</b>	411
<b>Design Code:</b>	NA	<b>Protection (IP):</b>	55
<b>Type:</b>	KFS	<b>Ambient Max (°C):</b>	40
<b>Frame:</b>	100L	<b>Alt Ambient Max(°C):</b>	--
<b>Mounting (IM):</b>	B3	<b>Ambient Min(°C):</b>	-15
<b>Phases:</b>	3	<b>Insulation Class:</b>	F
<b>Poles:</b>	4	<b>IEC Design:</b>	N
<b>Output Power :</b>	3HP/2.2kW	<b>Nominal Efficiency (%):</b>	IE3-89.5
<b>RPM:</b>	1734	<b>Guaranteed Efficiency (%):</b>	87.9
<b>Voltage(V):</b>	220/440	<b>Power Factor (%):</b>	81.0
<b>Hertz:</b>	60	<b>Bearing - DE:</b>	6206/2Z C3
<b>Amps - FL:</b>	7.96/3.98	<b>Bearing - ODE:</b>	6205/2Z C3
<b>Service Factor:</b>	1.15	<b>Vibration (mm/s) rms:</b>	2.8
<b>Alt Service Factor:</b>	--		

Enclosure is Totally Enclosed Fan-Cooled

---

Stamped Nameplate Notes:Additional Information:

SUITABLE FOR DOL STARTING  
 ROTATION: CW VIEWED FROM DE  
 INVERTER DUTY PER IEC TS 60034-25, SECTION 18  
 INVERTER RATED PWM 20:1 VARIABLE TORQUE, 1.0 SF



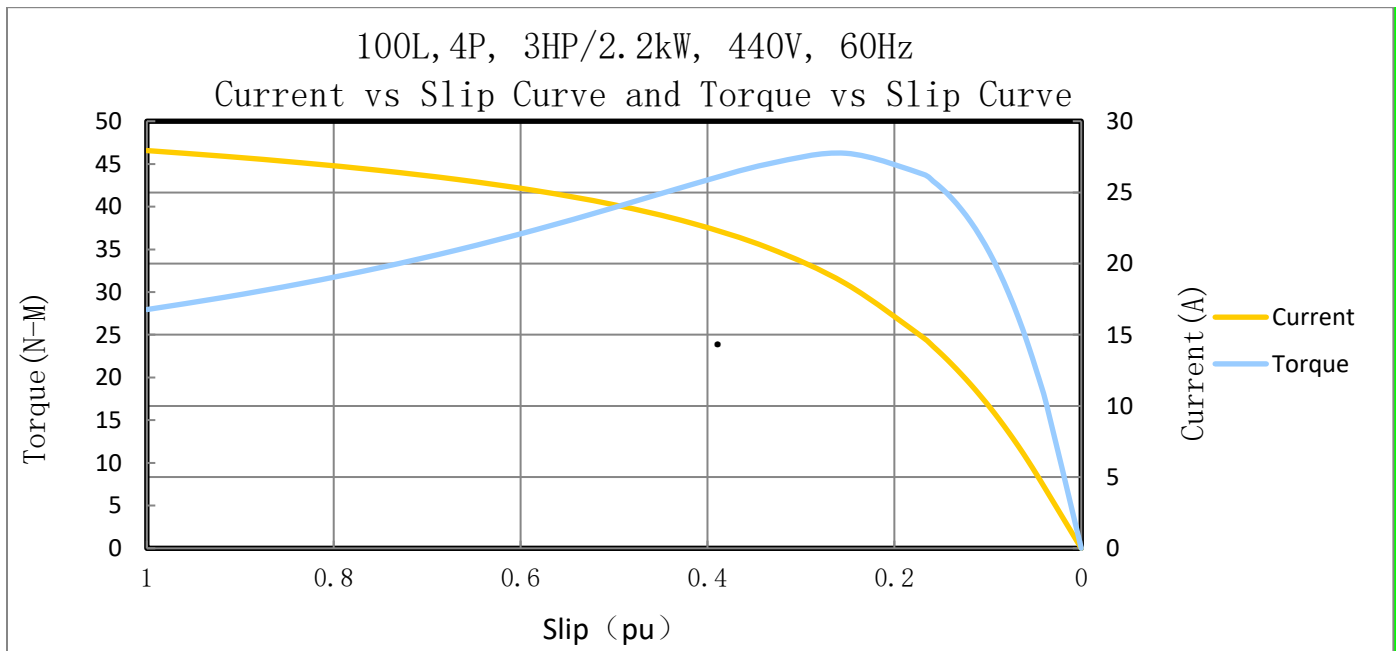
**Performance Characteristic:**

LOAD %	125.0	115.0	100.0	75.0	50.0	25.0	0.0
% EFF	88.27	88.81	89.50	90.26	90.04	86.50	0
% PF	85.73	84.40	81.72	74.45	61.15	37.91	16.95
AMPS	4.77	4.43	3.95	3.22	2.62	2.20	2.07

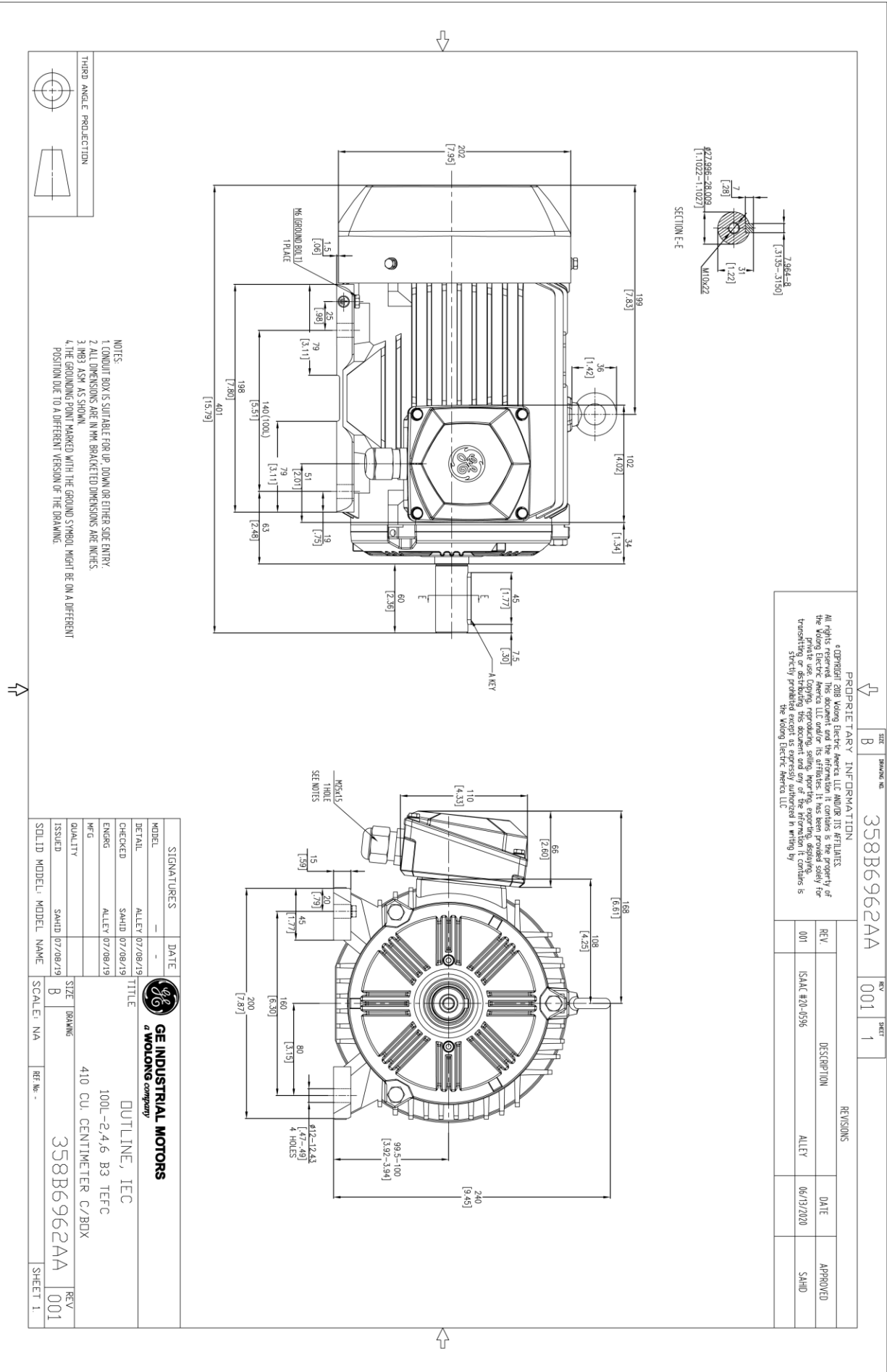
TORQUE(FL) N-m                    12.1    TORQUE(LR)%FL            229.9    TORQUE(BD)%FL            377.8  
 AMPS(LR 440V)                    27.94    PF AT START                    16.95%

**Other Useful Information for Application:**

Rotor Inertia (Kg-m <sup>2</sup> ) :	0.01
Max load inertia (Kg-m <sup>2</sup> ):	0.716
Load Type:	Square Torque/Speed Characteristic
Voltage:	100%
Number of starts per hour:	2 Cold or 1 Hot
Acceleration Time with maximum inertia (sec):	2.92
Safe stall time (sec): Cold/Hot	20.9/8.5



Marks:



PROPRIETARY INFORMATION

© Copyright 2018 Wabco Electric America, LLC. All rights reserved. This document and the information it contains is the property of Wabco Electric America LLC and/or its affiliates. It has been provided solely for private use. Copying, reproducing, selling, importing, exporting, displaying, transmitting or distributing this document and any of the information it contains is strictly prohibited without the prior written consent of Wabco Electric America LLC.

REV	DESCRIPTION	DATE	APPROVED
001	ISAC #23-0596	06/13/2020	SAMD

SIGNATURES	DATE
MODEL	ALLEY 07/08/19
DETAIL	SAMD 07/08/19
CHECKED	ALLEY 07/08/19
ENGNG	
DRG	
QUALITY	
ISSUED	SAMD 07/08/19

**GE INDUSTRIAL MOTORS**  
a WOLONG company

OUTLINE, IEC  
100L-2, 4, 6, B3 TEFC  
410 CU CENTIMETER C/BOX

358B6962AA

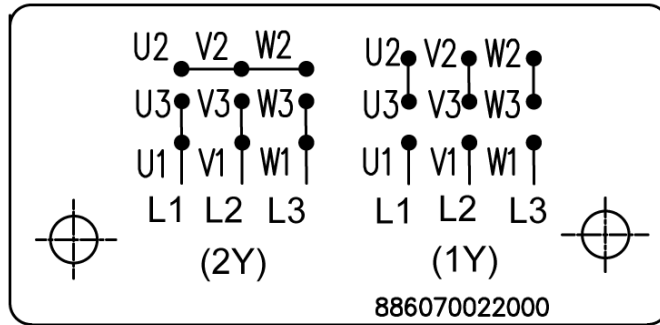
SCALE: NA REF: No.

SHEET 1

Marks:

**Connection Diagram**

886070022000



**PTC Diagram**

886070014000

