



GE INDUSTRIAL MOTORS
a **WOLONG** company

Product Information Packet

September 23, 2022

Data shown is for the current revision model #. Ensure your nameplate model # matches.

Model Number:	5KFS312ZWL2050
Catalog Number:	WI218
Instruction Manual:	GEI-M1052-SP
Connection Diagram:	886070022200
Outline Drawing:	358B6971AD

Accessory Connection Diagrams

Bearing Thermocouple:	None	Heater:	None
RTD:	None	Thermistor:	886070014200
Thermostat:	None	Winding Thermocouple:	None
Bearing RTD:	None		

Table of Contents

Specification	01
Performance Characteristics	02
Outline Drawing	03
Connection Drawing(s)	04

Marks:

MODEL NUMBER:	5KFS312ZWL2050	Estimated Weight(kg):	1015
Outline Drawing:	358B6971AD	Duty:	S1
Connection Diagram:	886070022200	Enclosure:	TEFC
Connection:	2DELTA / 2WYE / DELTA	Encl Construction:	Energy Saver
Instruction Book:	GEI-M1052-SP	Cooling (IC):	411
Design Code:	NA	Protection (IP):	55
Type:	KFS	Ambient Max (°C):	40
Frame:	315M	Alt Ambient Max(°C):	--
Mounting (IM):	B3	Ambient Min(°C):	-15
Phases:	3	Insulation Class:	F
Poles:	4	IEC Design:	N
Output Power :	180HP/132kW	Nominal Efficiency (%):	IE3-96.2
RPM:	1790	Guaranteed Efficiency (%):	95.6
Voltage(V):	220/380/440	Power Factor (%):	89
Hertz:	60	Bearing - DE:	6319 C3
Amps - FL:	392/226/196	Bearing - ODE:	6319 C3
Service Factor:	1.15	Vibration (mm/s) rms:	2.8
Alt Service Factor:	--		

Enclosure is Totally Enclosed Fan-Cooled

Stamped Nameplate Notes:Additional Information:

SUITABLE FOR DOL STARTING
 ROTATION: CW VIEWED FROM DE
 INVERTER DUTY PER IEC TS 60034-25, SECTION 18
 INVERTER RATED PWM 20:1 VARIABLE TORQUE, 1.0 SF



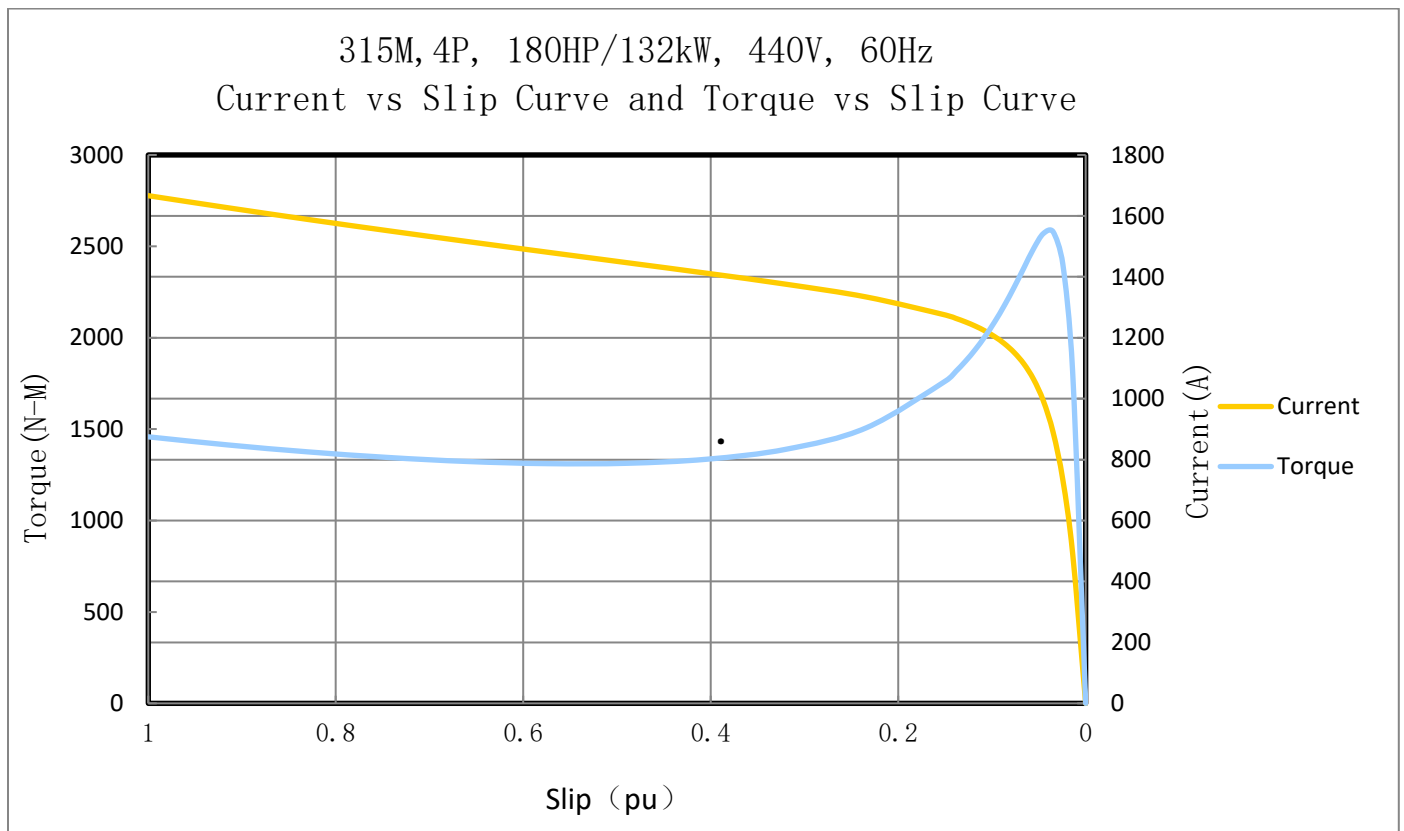
Performance Characteristic:

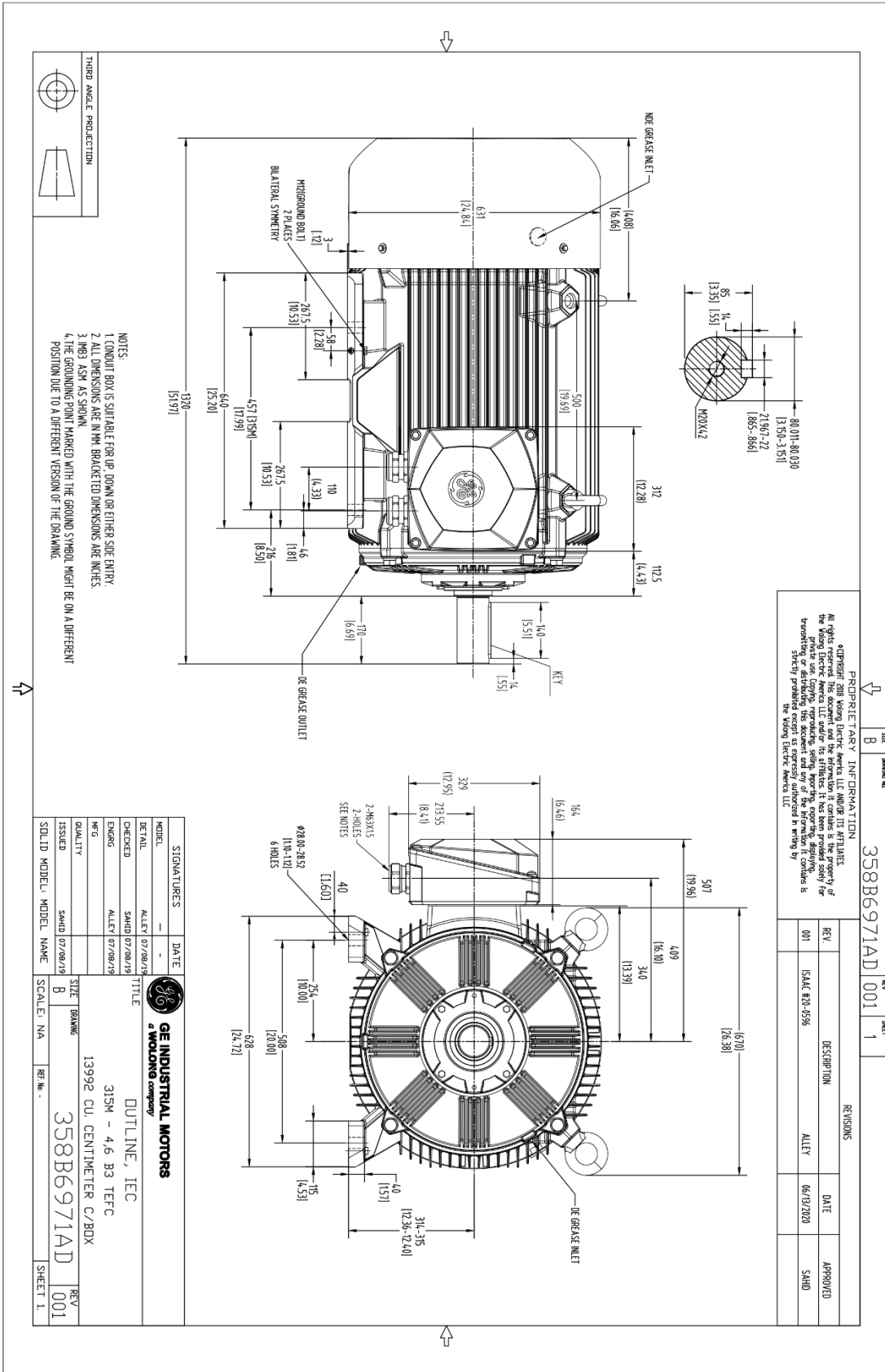
LOAD %	125.0	115.0	100.0	75.0	50.0	25.0	0.0
% EFF	96.42	96.48	96.54	96.54	96.20	94.66	0
% PF	92.49	92.22	91.55	89.21	82.98	63.23	26.67
AMPS	243	224	196	151	108	72	55

TORQUE(FL) N-m 703 TORQUE(LR)%FL 207 TORQUE(BD)%FL 365
 AMPS(LR 440V) 1665 PF AT START 26.67%

Other Useful Information for Application:

Rotor Inertia (Kg-m ²) :	3.2628
Max load inertia (Kg-m ²):	26.9696
Load Type:	Square Torque/Speed Characteristic
Voltage:	100%
Number of starts per hour:	2 Cold or 1 Hot
Acceleration Time with maximum inertia (sec):	2.2
Safe stall time (sec): Cold/Hot	46.7/19



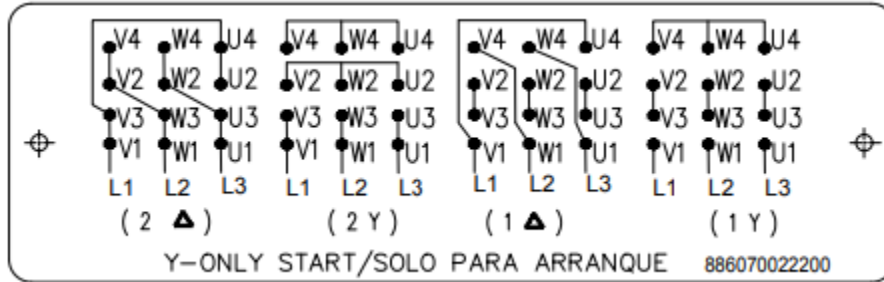


Marks:

Marks:

Connection Diagram

886070022200



PTC Diagram

886070014200

