



**GE INDUSTRIAL MOTORS**  
a **WOLONG** company

# Product Information Packet

September 13, 2022

Data shown is for the current revision model #. Ensure your nameplate model # matches.

<b>Model Number:</b>	<b>5KFS112ZWL1034</b>
<b>Catalog Number:</b>	<b>WI174</b>
<b>Instruction Manual:</b>	GEI-M1052-SP
<b>Connection Diagram:</b>	886070022100
<b>Outline Drawing:</b>	358B6963AA

## Accessory Connection Diagrams

<b>Bearing Thermocouple:</b>	None	<b>Heater:</b>	None
<b>RTD:</b>	None	<b>Thermistor:</b>	886070014100
<b>Thermostat:</b>	None	<b>Winding Thermocouple:</b>	None
<b>Bearing RTD:</b>	None		

## Table of Contents

Specification	01
Performance Characteristics	02
Outline Drawing	03
Connection Drawing(s)	04

Marks:

<b>MODEL NUMBER:</b>	<b>5KFS112ZWL1034</b>	<b>Estimated Weight(kg):</b>	41
<b>Outline Drawing:</b>	358B6963AA	<b>Duty:</b>	S1
<b>Connection Diagram:</b>	886070022100	<b>Enclosure:</b>	TEFC
<b>Connection:</b>	2DELTA / 2WYE / DELTA	<b>Encl Construction:</b>	Energy Saver
<b>Instruction Book:</b>	GEI-M1052-SP	<b>Cooling (IC):</b>	411
<b>Design Code:</b>	NA	<b>Protection (IP):</b>	55
<b>Type:</b>	KFS	<b>Ambient Max (°C):</b>	40
<b>Frame:</b>	112M	<b>Alt Ambient Max(°C):</b>	--
<b>Mounting (IM):</b>	B3	<b>Ambient Min(°C):</b>	-15
<b>Phases:</b>	3	<b>Insulation Class:</b>	F
<b>Poles:</b>	2	<b>IEC Design:</b>	N
<b>Output Power :</b>	5.4HP/4kW	<b>Nominal Efficiency (%):</b>	IE3-88.5
<b>RPM:</b>	3480	<b>Guaranteed Efficiency (%):</b>	86.8
<b>Voltage(V):</b>	220/380/440	<b>Power Factor (%):</b>	87.0
<b>Hertz:</b>	60	<b>Bearing - DE:</b>	6206/2Z C3
<b>Amps - FL:</b>	13.63/7.89/6.82	<b>Bearing - ODE:</b>	6206/2Z C3
<b>Service Factor:</b>	1.15	<b>Vibration (mm/s) rms:</b>	2.8
<b>Alt Service Factor:</b>	--		

Enclosure is Totally Enclosed Fan-Cooled

---

Stamped Nameplate Notes:Additional Information:

SUITABLE FOR DOL STARTING  
 ROTATION: CW VIEWED FROM DE  
 INVERTER DUTY PER IEC TS 60034-25, SECTION 18  
 INVERTER RATED PWM 20:1 VARIABLE TORQUE, 1.0 SF



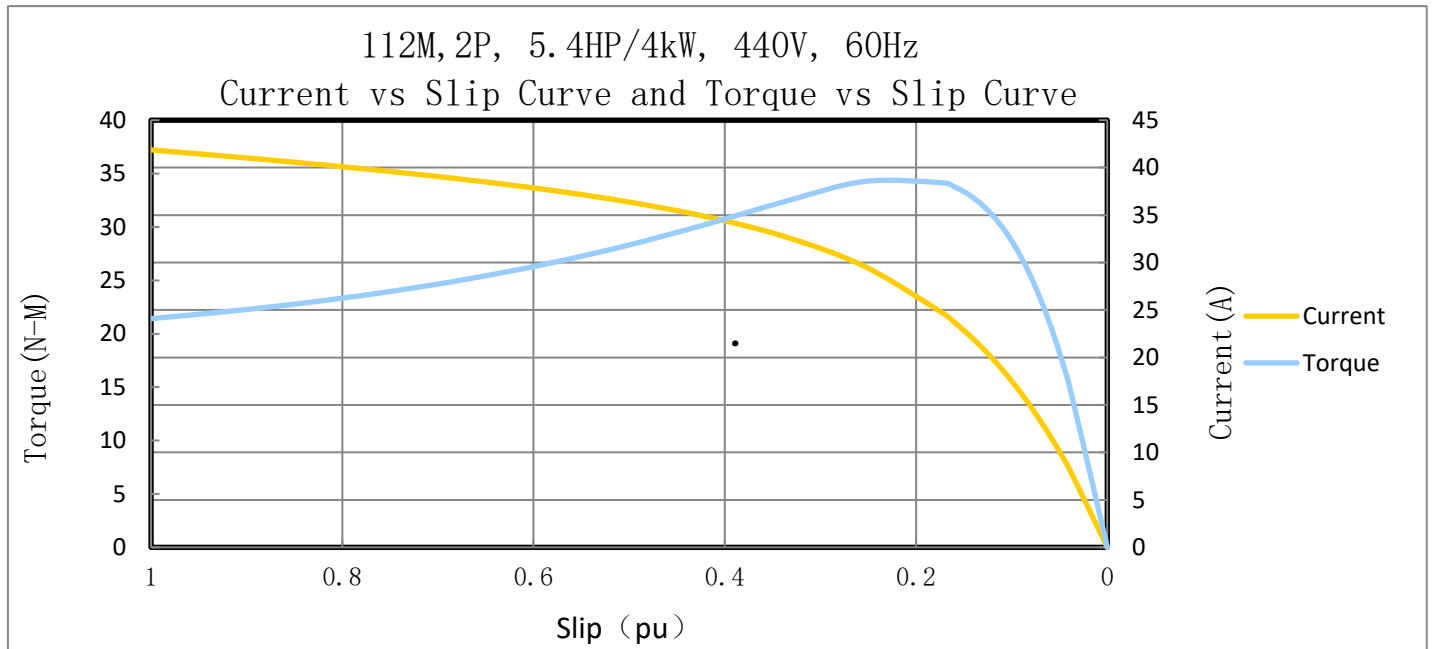
**Performance Characteristic:**

LOAD %	125.0	115.0	100.0	75.0	50.0	25.0	0.0
% EFF	88.58	89.03	89.58	90.03	89.38	84.99	0
% PF	89.12	88.56	87.32	83.08	73.75	51.72	25.66
AMPS	8.31	7.66	6.70	5.27	3.98	2.98	2.49

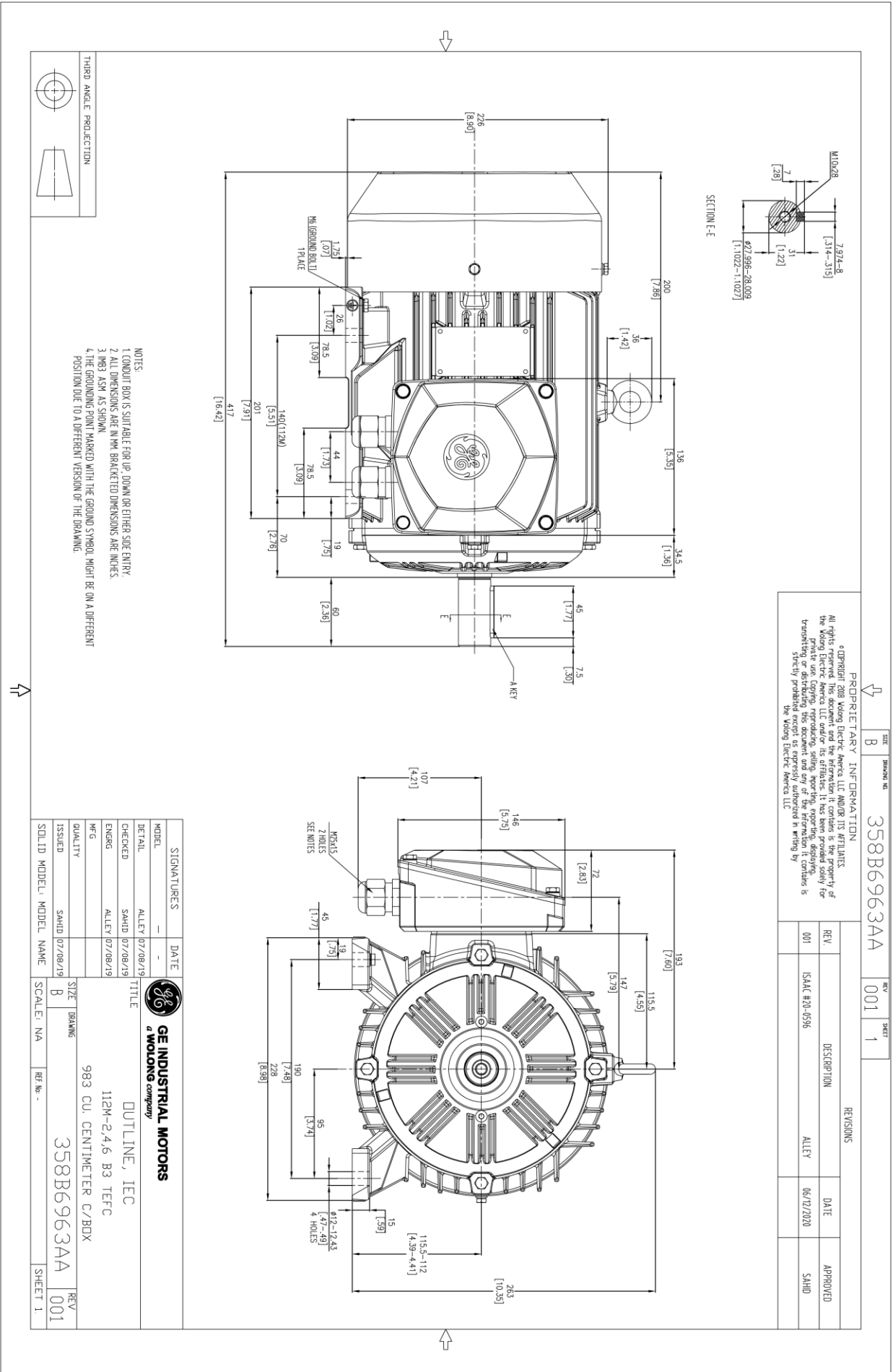
TORQUE(FL) N-m                    11.0    TORQUE(LR)%FL            194.6    TORQUE(BD)%FL            309.6  
 AMPS(LR 440V)                    40.89    PF AT START                    25.66%

**Other Useful Information for Application:**

Rotor Inertia (Kg-m <sup>2</sup> ) :	0.0069
Max load inertia (Kg-m <sup>2</sup> ):	0.969
Load Type:	Square Torque/Speed Characteristic
Voltage:	100%
Number of starts per hour:	2 Cold or 1 Hot
Acceleration Time with maximum inertia (sec):	10.8
Safe stall time (sec): Cold/Hot	27.6/11.2



Marks:



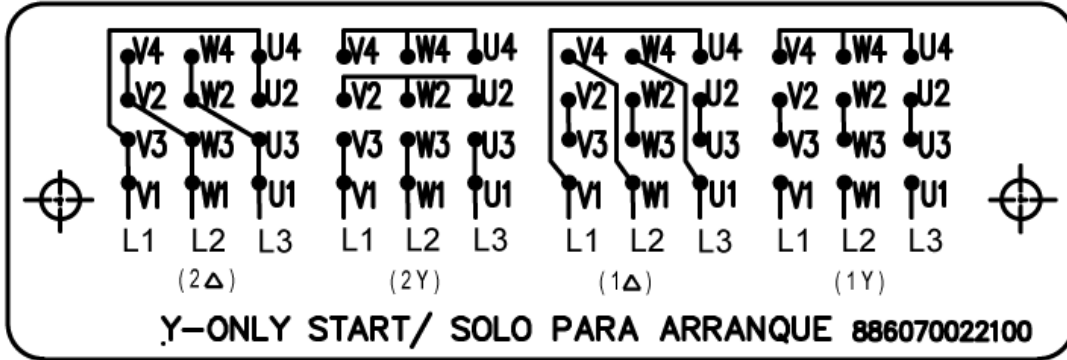
PROPRIETARY INFORMATION

© COPYRIGHT 2018 Wolong Electric America LLC AND/OR ITS AFFILIATES. All rights reserved. This document and the information it contains is the property of Wolong Electric America LLC and/or its affiliates. It has been provided solely for private use (copying, reproducing, selling, importing, exporting, distributing, transmitting, or otherwise making available to the public) and no other use is strictly prohibited except as expressly authorized in writing by the Wolong Electric America LLC.

Marks:

**Connection Diagram**

886070022100



**PTC Diagram**

886070014100

