

WPG2200*76

DIESEL GENERATING SET

GENERATING SET RATINGS

60Hz – 1800rpm @ 0.8p.f

	DCP		PRP		ESP	
	kVA	kWe	kVA	kWe	kVA	kWe
Voltage	2500	2000	2500	2000	2750	2200
416/240	2500	2000	2500	2000	2750	2200
440/254	2500	2000	2500	2000	2750	2200
480/277	2500	2000	2500	2000	2750	2200

PRODUCT FEATURES

Engine and block

- Vermicular graphite cast iron cylinder block and cylinder head
- Alloyed cast iron, wet cylinder liners with fire ring on the top
- Separate cylinder head with 4 valves, top-down cooling
- Hydraulic bolt for both the cylinder head and bearing cap
- Hardened steel forged crankshaft with induction hardened journals, crankpins and radius
- Monoblock piston with PCJ

Cooling System

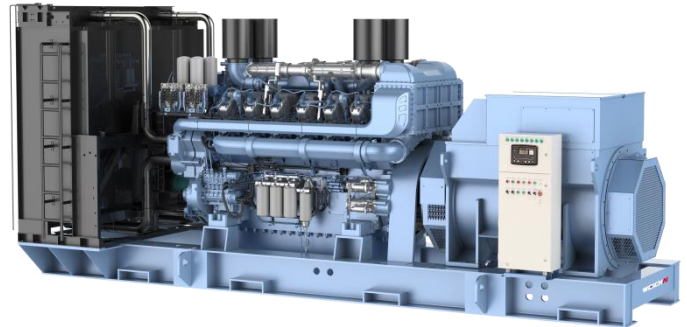
- Radiator and hoses supplied separately
- Two separate circuits
- High temperature circuit equipped with thermostatically-controlled system with one gear-driven coolant pump
- Low temperature circuit equipped with thermostatically-controlled system with one gear-driven coolant pump

Fuel System

- Super-high fuel supply system for more peak fire pressure
- Pre-filter and main filters with electric fuel pump

Lubrication System

- Fin oil cooler, 5 oil filters
- Bypass oil and oil thermostat to keep the oil temperature steady



- Electrical oil pre-lube pump to pre-lubricate the engine and ensure good starting ability

Air Intake

- 4 single-stage turbochargers
- Air filters with restriction indicator

Electrical System

- Each starting system comes with 2 x 24 Vdc electric starter motors and 1 x battery charging alternator
- LOP + HWT sensors

Exhaust System

- Exhaust manifold and turbocharger shield for heat isolating

Alternator

- Brushless, 4 Pole, IP23 drip-proof revolving field design built with Class H insulation and Class F temperature rise
- Low reactance with 2/3 pitch windings on the stator
- Direct-coupled by high-elasticated coupling
- Sustained overcurrent >300% in 10 sec
- Direct drive centrifugal blower fan cooling

Control module

- DSE control module is ideal for a wide control range to manage, monitor, and diagnose quickly and easily.
- Display status message Provide protection Auto shutdown at fault detection

GENERATOR SET SPECIFICATIONS		
Governor and regulation class		In accordance to ISO 8528-5 Class G3 performance
Phase number and connection		3 phase, 4 wires, Y-type
Cooling method		Closed looped water-cooled
Starting method		DC 24V Electric starter
Steady-state voltage deviation		≤± 1%
Steady-state frequency band		≤ 0.5%
ENGINE		
Brand / Model		Baudouin / 12M55G2250/6
Gross Power	kWm	ESP – 2460 / PRP - 2200
Cylinder / Type / Aspiration		12 / V- Type / Turbocharged and intercooled
Bore x Stroke	mm	180 x 215
Displacement	L	65.65
Compression ratio		16.5:1
Brake Mean Effective Pressure	kPa	ESP – 2500

COOLING SYSTEM		
Type of Coolant		Liquid(water + 50% antifreeze)
Total Cooling System Capacity (with Radiator)	L	700
Max coolant temperature – shutdown	°C	110
Cooling Fan Airflow	m3/min	2500


LUBRICATION SYSTEM		
Operating Temperature range before Engine	°C	78 -105
Oil consumption	g/kW.hr	≤ 0.4
Total lub oil capacity (including filters)	L	560
Type of lub oil filter		Spin-on full flow filter

FUEL SYSTEM		
Type of fuel filter		Spin-on fuel flow filter
Min. internal diameter of the supply pipe	mm	19
Min. internal diameter of the return pipe	mm	19
Max fuel return restriction	Bar	0.2
Max. fuel inlet temperature	°C	50
Fuel supply flow	L/hr	2800
Fuel Consumption (Tolerance +3%)		
Rating	gr/kWh	L/hr
100%ESP	200.1	576.9

100%PRP	199.1	521.6
75%PRP	200.7	405.5
50%PRP	213.2	276.3
25%PRP	247.1	166.4

EXHAUST SYSTEM		
Exhaust Gas temperature after the turbocharger	°C	TBD
Exhaust Gas flow	m3/min	ESP – 554.1 PRP –501.5
Max Exhaust back pressure	mBar	150

ALTERNATOR	
Brand / Model	Leroy Somer / LSA 52.3 UL16
Rated Current	3007.1A
Coupling / No. of Bearing	Direct / Double
Winding Pitch	2/3
Cooling type	Air
Voltage regulation method	AVR
Winding temperature sensor	PT100
Bearing temperature sensor	PT100
Anti-condensation heater voltage	AC230V
Insurance	Class H
Temperature rise	Class F
Protection Grade	IP23
Efficiency at 0.8p.f.@100% load	95.94%

CONTROL MODULE	
<p>The control module is an easy to use multi-generator load Share system</p> <p>DSE control module is ideal for a wide variety of demanding load share applications</p> <p>Direct USB connection to PC.</p> <p>All communication ports capable of being active at the same time</p> <p>Sequential set start /Automatic hours run balancing.</p> <p>Hours counter provides accurate information for monitoring and maintenance.</p>	



STANDARD CONDITIONS

Standard operating environment: ambient temperature is 5°C~40°C, the altitude is less than 1000m, the relative humidity is less than 90%(25°C), and there is no dust, sand dust, salt fog, mold, condensation environment, etc.

If the operating environment exceeds the above requirements, please contact the factory and consult.

Ambient adaptability protection measures for alternators

Ambient type	Ambient description	Measures of protection
General Ambient	The air is clean and dry, the humidity is $\leq 90\%$, and the distance from the coastline is $\geq 30\text{km}$; Non-industrial ambient (chemical splash, acid-base steam, corrosive environment, etc.)	standard configuration
Humid Ambient	The humidity above 90% or condensation occurs	Anti-condensation heating
Salt spray Ambient	Salt fog crystals are produced in seaside ($< 30\text{km}$ from the coastline) or island Ambient	Anti-condensation heating; Spray three-proof paint on winding surface; Spraying epoxy protection for parts and structures.
Dust Ambient	The ambient where mining, building construction, desert Gobi or sandstorm occur	Improve the protection level of the alternator to IP44; Install filters.

If you need to use protective measures beyond the standard, please contact the factory and consult.

Special working condition

If the operating conditions of the generator meet the following conditions, please contact the factory and consult.

- Multistage parallel operation
- Grid-connected operation
- As the main power supply, it runs continuously for a long time
- The load includes a high power motor type load
- Capacitive load
- Special ambient such as high temperature, cold and plateau

Ratings definitions

Emergency standby power (ESP):

Emergency Standby Power is the maximum power available for a varying load for the duration of a main power network failure. The average load factor over 24 hours of operation should not exceed 70% of the engine's ESP power rating.

Typical operational hours of the engine is 200 hours per year, with a maximum usage of 500 hours per year. This includes an annual maximum of 25 hours per year at the ESP power rating. No overload capability is allowed. The engine is not to be used for sustained utility paralleling applications.

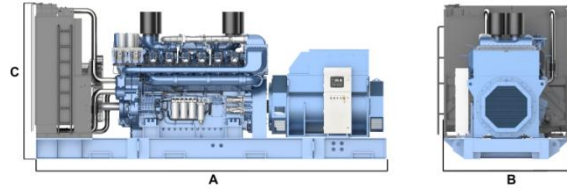
Prime power (PRP):

Prime Power is the maximum power available for unlimited hours of usage in a variable load application. The average load factor should not exceed 70% of the engine's PRP power rating during any 24 hour period. An overload capability of 10% is available, however, this is limited to 1 hour within every 12 hour period.

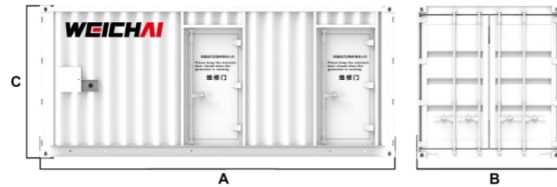
Data Center power (DCP):

Data Center Power is the maximum power which an engine is capable of delivering while supplying a variable or continuous load and during unlimited run hours.

Open genset



Silence genset



This outline drawing is to provide representative configuration details for Model series only. See respective model data sheet for specific model outline drawing number.

Do not use for installation design

Dimension and Weight

Structure	Model	Dim "A" mm	Dim "B" mm	Dim "C" mm	Dry wt.* kg
Open	WPG2200B76	7300	2680	2980	21300
Silence	WPG2200C76	13500	3000	3300	34800

* Note: Weights represent a set with standard features. See outline drawings for weights of other configurations.

Codes and standards

ISO 9001	This generator set is designed and manufactured in facilities certified to ISO 9001.	ISO 8528	This generator set has been designed to comply with ISO 8528 regulation.
CE	The CE marking is only valid when equipment is used in a fixed installation application. Material compliance declaration is available upon request.		

For more information contact your local Weichai distributor or visit www.weichai.com / www.dinatek.ec

