

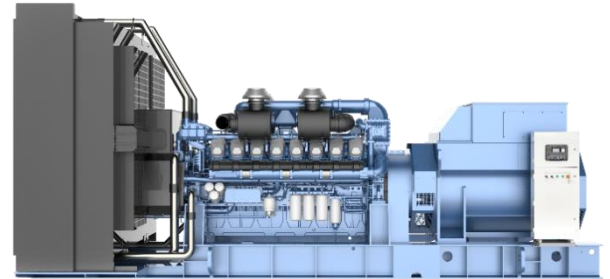
WPG1650*76

DIESEL GENERATING SET

GENERATING SET RATINGS

60Hz – 1800rpm @ 0.8p.f

	PRP		ESP	
	kVA	kWe	kVA	kWe
Voltage	1875	1500	2000	1650



PRODUCT FEATURES

Engine and block

- Cast iron cylinder block with inspection door per cylinder
- Cast iron cylinder liners, wet type and replaceable valves guides and seats
- Separate cast iron cylinder heads with 4 valves
- Hardened steel forged crankshaft with induction hardened journals, crankpins and radius
- Lube oil cooled light alloy pistons with high performance piston rings

Cooling System

- Radiator and hoses supplied separately
- Two separate circuits
- High temperature circuit equipped with thermostatically-controlled system with two gear driven coolant pumps
- Low temperature circuit equipped with belt driven coolant pump

Fuel System

- High pressure common rail system with one high pressure pump gear driven in the V angle of cylinder block
- Two rails mounted on the sides of the engine, double wall, under inlet manifold
- Duplex fine filter and water separation filter assembly with transparent cup for better efficiency
- Electric fuel priming pump integrated in the filters support

Lubrication System

- Full flow screw able oil filters
- Lube oil purifier with replaceable cartridge
- Water cooled lube oil cooler

Air Intake and exhaust system

- The 4 Turbo-chargers are feeding a single water-air intercooler, mounted over the flywheel housing, with vertical flow
- Special rear mounted air filter with restriction indicator
- Exhaust manifold and turbocharger shield for heat isolating

Electrical System

- 2 x 24 Vdc electric starter motors and 1 battery charging alternator
- LOP + HWT sensors

Alternator

- Brushless, 4 Pole, IP23 drip-proof revolving field design built with Class H insulation and Class F temperature rise
- Low reactance with 2/3 pitch windings on the stator
- Sustained overcurrent >300% in 10 sec
- Direct drive centrifugal blower fan cooling

Control module

- DSE control module is ideal for a wide control range to manage, monitor, and diagnose quickly and easily.
- Display status message Provide protection Auto shutdown at fault detection



GENERATOR SET SPECIFICATIONS

Governor and regulation class	In accordance to ISO 8528-5 Class G3 performance
Phase number and connection	3 phase, 4 wires, Y-type
Cooling method	Closed looped water-cooled
Starting method	DC 24V Electric starter
Steady-state voltage deviation	≤± 1%
Steady-state frequency band	≤ 0.5%

ENGINE

Brand / Model	Baudouin / 16M33G1650/6	
Gross Power	kWm	ESP – 1785 / PRP – 1625
Cylinder / Type / Aspiration	/	16/ V- Type / Turbocharged and Aftercooled
Bore x Stroke	mm	150 x 185
Displacement	L	52.3
Compression ratio	/	15:1
Brake Mean Effective Pressure	kPa	ESP –2275

COOLING SYSTEM

Type of Coolant	Liquid(water + 50% antifreeze)	
Total Cooling System Capacity (with Radiator)	L	475
Max coolant temperature – shutdown	°C	108
Cooling Fan Airflow	m ³ /min	2280

LUBRICATION SYSTEM

Operating Temperature range before Engine	°C	78 -105
Oil consumption	g/kW.hr	≤ 0.6
Total lub oil capacity (including filters)	L	171
Type of lub oil filter	Spin-on full flow filter	

FUEL SYSTEM

Type of fuel filter	Spin-on fuel flow filter		
Min. internal diameter of the supply pipe	mm	19	
Min. internal diameter of the return pipe	mm	19	
Max fuel return restriction	Bar	0.2	
Max. fuel inlet temperature	°C	50	
Fuel supply flow	L/hr	636.2	
Fuel Consumption (Tolerance +/- 5%)			
Rating		gr/kWh	L/hr
100%ESP		209.6	445.4
100%PRP		204.8	396.2
75%PRP		197.0	285.8
50%PRP		203.4	196.7
25%PRP		231.9	112.2

EXHAUST SYSTEM

Exhaust Gas temperature after the turbocharger	°C	550
Exhaust Gas flow	m3/min	ESP – 442 PRP – 402.9
Max Exhaust back pressure	mBar	75

ALTERNATOR

Brand / Model	Leroy Somer / LSA 52.3 S6
Rated Current	2353A
Coupling / No. of Bearing	Direct / Single
Winding Pitch	2/3
Cooling type	Air
Voltage regulation method	AVR D550
Winding temperature sensor	PT100
Bearing temperature sensor	PT100
Anti-condensation heater voltage	AC254V
Insurance	Class H
Temperature rise	Class F
Protection Grade	IP23
Efficiency at 0.8p.f.@100% load	96%

CONTROL MODULE

The control module is an easy to use multi-generator load Share system

DSE control module is ideal for a wide variety of demanding load share applications

Direct USB connection to PC.

All communication ports capable of being active at the same time

Sequential set start /Automatic hours run balancing.

Hours counter provides accurate information for monitoring and maintenance.





STANDARD CONDITIONS

Standard operating environment: ambient temperature is 5°C~40°C, the altitude is less than 1000m, the relative humidity is less than 90%(25°C), and there is no dust, sand dust, salt fog, mold, condensation environment, etc.

If the operating environment exceeds the above requirements, please contact the factory and consult.

Ambient adaptability protection measures for alternators

Ambient type	Ambient description	Measures of protection
General Ambient	The air is clean and dry, the humidity is $\leq 90\%$, and the distance from the coastline is $\geq 30\text{km}$; Non-industrial ambient (chemical splash, acid-base steam, corrosive environment, etc.)	standard configuration
Humid Ambient	The humidity above 90% or condensation occurs	Anti-condensation heating
Salt spray Ambient	Salt fog crystals are produced in seaside ($< 30\text{km}$ from the coastline) or island Ambient	Anti-condensation heating; Spray three-proof paint on winding surface; Spraying epoxy protection for parts and structures.
Dust Ambient	The ambient where mining, building construction, desert Gobi or sandstorm occur	Improve the protection level of the alternator to IP44; Install filters.

If you need to use protective measures beyond the standard, please contact the factory and consult.

Special working condition

If the operating conditions of the generator meet the following conditions, please contact the factory and consult.

- Multistage parallel operation
- Grid-connected operation
- As the main power supply, it runs continuously for a long time
- The load includes a high power motor type load
- Capacitive load
- Special ambient such as high temperature, cold and plateau



Ratings definitions

Emergency standby power (ESP):

Emergency Standby Power is the maximum power available for a varying load for the duration of a main power network failure. The average load factor over 24 hours of operation should not exceed 70% of the engine's ESP power rating.

Typical operational hours of the engine is 200 hours per year, with a maximum usage of 500 hours per year. This includes an annual maximum of 25 hours per year at the ESP power rating. No overload capability is allowed. The engine is not to be used for sustained utility paralleling applications.

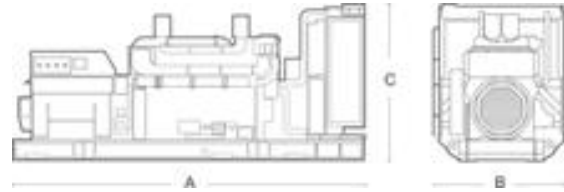
Prime power (PRP):

Prime Power is the maximum power available for unlimited hours of usage in a variable load application. The average load factor should not exceed 70% of the engine's PRP power rating during any 24 hour period. An overload capability of 10% is available, however, this is limited to 1 hour within every 12 hour period.

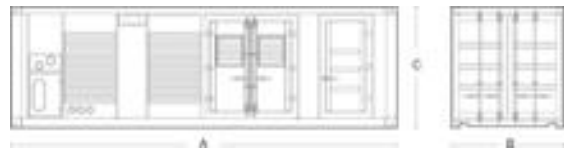
Data Center power (DCP):

Data Center Power is the maximum power which an engine is capable of delivering while supplying a variable or continuous load and during unlimited run hours.

Open genset



Silence genset



This outline drawing is to provide representative configuration details for Model series only. See respective model data sheet for specific model outline drawing number.

Do not use for installation design

Dimension and Weight

Structure	Model	Dim "A" mm	Dim "B" mm	Dim "C" mm	Dry wt.* kg	Tank capacity L
Open	WPG1650B76	5800	2194	2761	14000	/
Silence	WPG1650C76	12192	2438	2896	29000	1000

* Note: Weights represent a set with standard features. See outline drawings for weights of other configurations.

Codes and standards

ISO 9001 	This generator set is designed and manufactured in facilities certified to ISO 9001.	ISO 8528 	This generator set has been designed to comply with ISO 8528 regulation.
CE 	The CE marking is only valid when equipment is used in a fixed installation application. Material compliance declaration is available upon request.		

For more information contact your local Weichai distributor or visit www.weichai.com

Version number :2024.7.25

Availability Details

- Air intake system: Air filter;
- Cooling system: Closed-loop cooling radiator;
- Fume extraction system: Expansion pipe, muffler and mating flange;
- Fuel system: Inlet return port connector, fuel filter;
- Lubrication system: Oil pan, oil filter;
- Vibration damping system: Rubber shock absorber;
- Electrical system: Control screen and switch cabinet;
- Silent System: Silencing box/container (silent unit configuration)

Note 1: Silent generator sets (L Series, C Series) can be used directly after installation on the ground, without the need for separate installation accessories, and open generator sets require appropriate installation accessories to install fume extraction systems, etc.

Note 2: The factory does not provide on-site installation accessories such as exhaust straight pipe, elbow, radiator shroud, etc. to the unit itself. The buyer needs to consider the installation of the accessories and the installation project in advance;